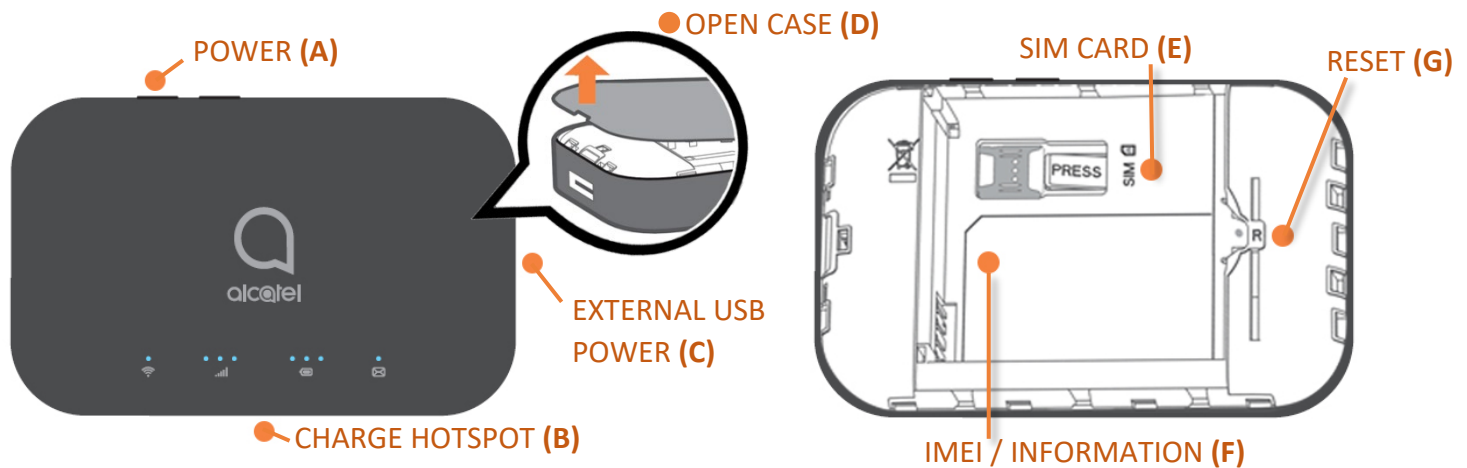



# T-Mobile alcatel LINKZONE® 2 HOTSPOT

Your T-Mobile "Alcatel Linkzone 2" Hotspot is activated and will work as soon as it is turned on. Service has been **pre-paid for a limited time**, visit the [Grossmont Technology website](#) for exact dates. Upon expiration of the prepaid service, you may return the Hotspot to campus or renew the service yourself at a cost of \$19.99/ Month.



## Getting Started & Connecting

1. Open Hotspot case (D) and install provided battery
2. Turn on the Hotspot by holding the power button for 3 seconds (A)
3. Locate the Hotspot WIFI name (SSID) and password on the information card inside of the box. (Information is also listed on a sticker under the battery (F))
4. Using your computer or smart device, connect to the Hotspot WIFI identified in step 3

 **NOTE:** Charge the Hotspot using the included USB-C cable and charger (B). You may also use the Hotspot as a battery pack by connecting another mobile device to the External USB power (C)

## Advanced Settings

Change WIFI Password / SSID Name

1. Connect to the Hotspot WIFI and navigate to <http://mobile.hotspot> using a web browser
2. Click **Settings** > **WIFI settings** and change the values that appear in the **Password** and **SSID** fields

Reset Hotspot (resets password & settings back to default (F))

1. Open Hotspot Case (D) and press the **RESET** button for 3 seconds (G)

## RENEW SERVICE (you pay \$19.99/month)

1. Visit <http://store.collegebuys.org> and search for "California Connects 4G LTE Mobile Internet"
2. Check the box that you already have a hotspot and enter the device **IMEI/ MEID (F)** number

## SUPPORT

**NOTE:** Hotspot service is provided by T-Mobile cellular and quality is dependent on reception in your area.

- **Hotspot Technical Support:** Mobile Citizen (877) 216-9603 | [support@mobilecitizen.org](mailto:support@mobilecitizen.org)
- **Billing Account Support:** <http://support.collegebuys.com>
- **Grossmont Checkout:** [grossmont.libcirc@gcccd.edu](mailto:grossmont.libcirc@gcccd.edu)
- **Grossmont Technology:** [www.grossmont.edu/technology/helpdesk](http://www.grossmont.edu/technology/helpdesk) > Guides > WIFI Hotspot