



GROSSMONT COLLEGE

Facilities Committee

Nov 1, 2023, 9:30am-11:00am

Location: Zoom

[Join Zoom Meeting](#)

AGENDA

Purpose The Facilities Committee identifies prioritizes and advocates for the facilities needs and services. It makes recommendations to the College Council for the strategic direction and implementation of facilities priorities. These recommendations address facilities policies and procedures, prioritization of facilities requests from annual unit plans*, facility requirements for existing programs, and projected facility needs of the college for the future. The committee will ensure that its recommendations are consistent with the objectives and recommendations established in the Facilities Plan, Strategic Plan, Educational Master Plan, and other supporting plans and reports (five-year capital outlay plan, use of space, scheduled maintenance, state and federal reports, etc.).

CO-CHAIRS	ASSOCIATED STUDENTS OF GROSSMONT COLLEGE	ADVISORY
<input checked="" type="checkbox"/> Loren Holmquist	<input checked="" type="checkbox"/> Renzo Tayag	<input type="checkbox"/> Agustin Albarran
<input checked="" type="checkbox"/> Jennifer Bennett	<input type="checkbox"/> Elliana Capurro	<input type="checkbox"/> Marsha Gable
		<input type="checkbox"/> Jason Allen
		<input checked="" type="checkbox"/> Reyna Torriente (PJ Proxy)

ACADEMIC SENATE	CLASSIFIED SENATE	ADMINISTRATORS' ASSOCIATION
<input checked="" type="checkbox"/> Jennifer Bennett	<input checked="" type="checkbox"/> Rochelle Weiser	<input type="checkbox"/> Maura Mehran
<input checked="" type="checkbox"/> Michael Bacon	<input checked="" type="checkbox"/> Chad Deitchman	<input checked="" type="checkbox"/> Vanessa Fountain (Shawn Proxy)

EX-OFFICIO	RECORDER	Campus Art Committee
<input checked="" type="checkbox"/> Patrice Braswell-Burris	<input checked="" type="checkbox"/> Colleen Parsons	<input checked="" type="checkbox"/> Jennifer Bennett
<input type="checkbox"/>		

ROUTINE BUSINESS	
Welcome and Introductions – Jennifer Bennett	Introductions
Establish Quorum – Jennifer Bennett	Yes
Additions/Deletions to Agenda – Jennifer Bennett	-Adding contact information for facilities department to agenda
Approve Meeting Notes & Follow-up – Jennifer Bennett	-Partrice Brawswell motions to approve the notes and agenda and Chad Dietchman seconds the motion. Motions passes
5-Minute Public Comment – Jennifer Bennett	None

NEW BUSINESS

<p>Nature Gardens Signs – Bonnie Ripley</p>	<p><i>Conservation club received a grant to have an interactive nature trail signs installed</i> <i>See power point</i></p> <p><i>Consensus unanimous to move this project forward to college council</i></p>
<p>FMO (Facilities, Maintenance, & Operations) Contact Information</p>	<p>See Contact Information attached. Information to be distributed to all representative groups Grossmont.FMO@gcccd.edu Restrooms.restrooms@gcccd.edu One phone number for FMO 619-644-7594</p>

COMMITTEE REPORTS

<p>Constituency Updates ASGC, Academic Senate, Classified Senate, Administrators Association</p>	<p>ASGC: Club rush</p> <p>Academic Senate: Presenting on Nov 6th for the facilities committee to Academic Senate</p> <p>Classified Senate: Held retreat</p> <p>Administrators Association: None</p>
<p>Construction Timeline and Campus Impacts – Loren Holmquist</p>	<p>See PowerPoint. Meeting last week with all departments on the move and details of what the 36 move will look like. Occupants will be moving “stuff” in December. People will not occupy until January.</p> <p>41 broiler project still underway</p> <p>51/55 renovation starts in March because of DSA</p> <p>200 heat temporary for now</p>
<p>Update - AUP / FPR (Facilities Project Requests) – Loren Holmquist</p>	<p>See list. Still awaiting information from CPIE to move forward with the process.</p>

INFORMATION AND DISCUSSION

<p>Report Back to Constituencies</p>	

FOR CONSENSUS

Previous Meeting Minutes	

FOLLOW-UP

Who	Item	Timeline

1. WORK AHEAD

-

NEXT MEETING: Dec 6, 2023

Committees are to establish norms

In order to create valued outcomes, a commitment to participation, dialogue, and the pursuit of value in the form of useful output by all is necessary. It is acknowledged that there are power dynamics in a room. Work must be done to create the equitable and inclusive environment sought for effective and active participation. To do so, council/committee members will establish behavioral norms that include the following meeting rules of engagement, make use of meeting tools, and respect the roles of each member.

Rules of Engagement

In participatory government, a high level of collegiality, respect, and civility is expected. Those expectations include the following rules:

- There is no rank in the room when at the committee table. All participants are treated as peers, both between constituencies and within constituencies.
- Speakers will be heard one at a time and without interruption. Participants will allow for moments of silence for thought and other viewpoints. In consideration of hearing all feedback, members should be mindful of how often and how long they speak. Equity in consensus building means including diverse perspectives at all levels of the organization.
- Members will be engaged and contribute, and challenge ideas, not people. All meeting attendees will be respectful/civil in their comments, responses, and body language.
- Members will listen to others, and seek to focus on the merits of what is being said, while making a good faith effort to understand the concerns of others. Council/committee members are encouraged to ask questions of clarification.
- Each person reserves the right to disagree with any proposal and accepts responsibility for offering alternatives that accommodate individual interests and the interests of others.

- All members should be mindful of the language used in discussions, including use of "I" statements instead of "they" attributions to relate anecdotal evidence or experiences. Members are encouraged to use an asset-minded approach that focuses on what works and how something can be done. This is in contrast to a deficit-minded approach that focuses on the negative and why an initiative, idea, or project can't get done.
- All council/committee members will be aware of the purpose and responsibility of their committees. When issues arise in discussion that are not supported by the committee's charge, the chair will identify the proper council, committee, or constituency group leadership for review, and forward the issue for consideration.
- Once consensus is reached after deliberation, council/committee members will support the group's recommendation.
- All members are to be on time when possible.
- All members are to complete the work when due.
- Each representative will report out to their groups.
- Each member is to send a proxy in their absence.
- The agreed meeting location is via Zoom.

WELCOME TO THE FACILITIES COMMITTEE

The best way to contact FMO is by email

Grossmont.FMO@gcccd.edu

For maintenance, grounds, custodial and operation needs

Colleen Parsons, Ryan Althaus, Bill Roessner, Pepe Levy, Joel Lopez

Grossmont.restrooms@gcccd.edu

For restrooms that need attention

FMO phone is not monitored 24/7

619-644-7594

FACILITIES COMMITTEE AGENDA

1. Welcome/Introductions - Jennifer
2. Agenda – Additions/Deletions – Jennifer
3. Approve Meeting Minutes – Jennifer
4. 5-Minute Public Comment – Jennifer
5. Constituency Updates – Jennifer
 1. Admin Association
 2. Classified Senate
 3. Academic Senate
 4. ASGC
6. **Communicating with FMO**
7. Nature Garden Signs – Bonnie Ripley
8. FPR update - Loren
9. Construction Timeline and Impacts - Loren
10. Constituency Group Time - Jennifer

DATE 11/1/23

WELCOME TO THE FACILITIES COMMITTEE

The best way to contact FMO is by email

Grossmont.FMO@gcccd.edu

For maintenance, grounds, custodial and operation needs

Colleen Parsons, Ryan Althaus, Bill Roessner, Pepe Levy, Joel Lopez

Grossmont.restrooms@gcccd.edu

For restrooms that need attention

FMO phone is not monitored 24/7

619-644-7594

FACILITIES COMMITTEE AGENDA

1. Welcome/Introductions - Jennifer
2. Agenda – Additions/Deletions – Jennifer
3. Approve Meeting Minutes – Jennifer
4. 5-Minute Public Comment – Jennifer
5. Constituency Updates – Jennifer
 1. Admin Association
 2. Classified Senate
 3. Academic Senate
 4. ASGC
6. **Nature Garden Signs – Bonnie Ripley**
7. FPR update - Loren
8. Construction Timeline and Impacts - Loren
9. Constituency Group Time - Jennifer

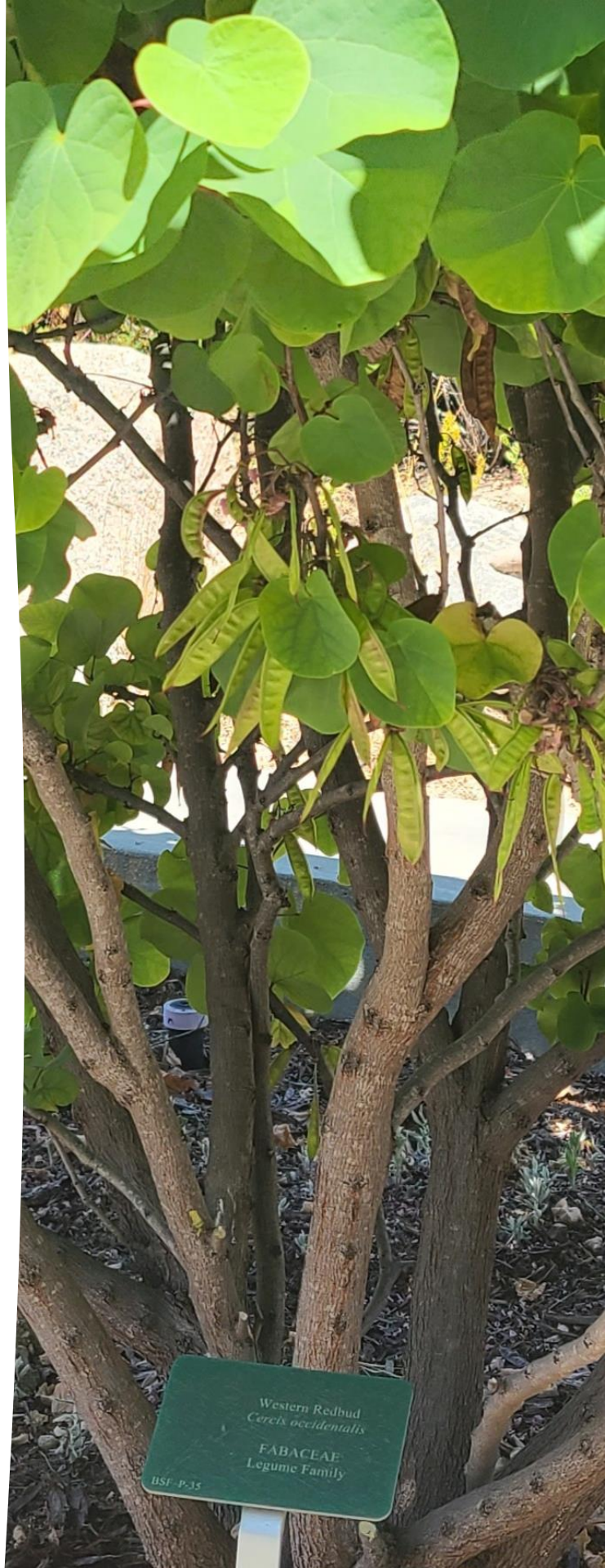
DATE 11/1/23

Interactive Nature Trail

Proposal for Approval by GCCCD Governing Board

Project Overview

This project will create a public Interactive Nature Trail on the Grossmont College campus. We will design and install interpretive signage on all six of Grossmont College's native plant gardens that represent different habitats and their uses in the most biodiverse county in the nation. A Kumeyaay Tribal representative will provide information on the names, usages, and history of the native plants. The signs will have scannable QR codes that will directly link to a website providing a nature walk map, all plant names (Common name, Latin binomial, and Kumeyaay name) associated with a picture, and additional history/information. The Grossmont College Nature Trail will provide underrepresented students and the local community an outdoor interactive classroom to engage with nature while learning about the local impacts of climate change, preserving native habitats and species, and expanding knowledge about Kumeyaay uses and names.



GROSSMONT COLLEGE CAMPUS MAP



Additional Stations if resources allow or in future

Main area of Interactive Nature Trail Stations

- Restrooms
 - Disabled Parking
 - Water Filling Station
 - Lactation Station
- Please note:
Grossmont College is a smoke-free & tobacco-free facility

43 Gymnasium

70 Library
Learning and Technology Resource Center
Technology Mail

42 (Off-Campus)

71 (Off-Campus)

70-005 (Off-Campus)

70-006 (Off-Campus)

70-007 (Off-Campus)

70-008 (Off-Campus)

70-009 (Off-Campus)

70-010 (Off-Campus)

70-011 (Off-Campus)

70-012 (Off-Campus)

70-013 (Off-Campus)

70-014 (Off-Campus)

70-015 (Off-Campus)

70-016 (Off-Campus)

70-017 (Off-Campus)

70-018 (Off-Campus)

70-019 (Off-Campus)

70-020 (Off-Campus)

70-021 (Off-Campus)

70-022 (Off-Campus)

70-023 (Off-Campus)

70-024 (Off-Campus)

70-025 (Off-Campus)

70-026 (Off-Campus)

70-027 (Off-Campus)

70-028 (Off-Campus)

70-029 (Off-Campus)

70-030 (Off-Campus)

70-031 (Off-Campus)

70-032 (Off-Campus)

70-033 (Off-Campus)

70-034 (Off-Campus)

70-035 (Off-Campus)

70-036 (Off-Campus)

70-037 (Off-Campus)

70-038 (Off-Campus)

70-039 (Off-Campus)

70-040 (Off-Campus)

70-041 (Off-Campus)

70-042 (Off-Campus)

70-043 (Off-Campus)

70-044 (Off-Campus)

70-045 (Off-Campus)

70-046 (Off-Campus)

70-047 (Off-Campus)

70-048 (Off-Campus)

70-049 (Off-Campus)

70-050 (Off-Campus)

70-051 (Off-Campus)

70-052 (Off-Campus)

70-053 (Off-Campus)

70-054 (Off-Campus)

70-055 (Off-Campus)

70-056 (Off-Campus)

70-057 (Off-Campus)

70-058 (Off-Campus)

70-059 (Off-Campus)

70-060 (Off-Campus)

70-061 (Off-Campus)

70-062 (Off-Campus)

70-063 (Off-Campus)

70-064 (Off-Campus)

70-065 (Off-Campus)

70-066 (Off-Campus)

70-067 (Off-Campus)

70-068 (Off-Campus)

70-069 (Off-Campus)

70-070 (Off-Campus)

70-071 (Off-Campus)

70-072 (Off-Campus)

70-073 (Off-Campus)

70-074 (Off-Campus)

70-075 (Off-Campus)

70-076 (Off-Campus)

70-077 (Off-Campus)

70-078 (Off-Campus)

70-079 (Off-Campus)

70-080 (Off-Campus)

70-081 (Off-Campus)

70-082 (Off-Campus)

70-083 (Off-Campus)

70-084 (Off-Campus)

70-085 (Off-Campus)

70-086 (Off-Campus)

70-087 (Off-Campus)

70-088 (Off-Campus)

70-089 (Off-Campus)

70-090 (Off-Campus)

70-091 (Off-Campus)

70-092 (Off-Campus)

70-093 (Off-Campus)

70-094 (Off-Campus)

70-095 (Off-Campus)

70-096 (Off-Campus)

70-097 (Off-Campus)

70-098 (Off-Campus)

70-099 (Off-Campus)

70-100 (Off-Campus)

70-101 (Off-Campus)

70-102 (Off-Campus)

70-103 (Off-Campus)

70-104 (Off-Campus)

70-105 (Off-Campus)

70-106 (Off-Campus)

70-107 (Off-Campus)

70-108 (Off-Campus)

70-109 (Off-Campus)

70-110 (Off-Campus)

70-111 (Off-Campus)

70-112 (Off-Campus)

70-113 (Off-Campus)

70-114 (Off-Campus)

70-115 (Off-Campus)

70-116 (Off-Campus)

70-117 (Off-Campus)

70-118 (Off-Campus)

70-119 (Off-Campus)

70-120 (Off-Campus)

70-121 (Off-Campus)

70-122 (Off-Campus)

70-123 (Off-Campus)

70-124 (Off-Campus)

70-125 (Off-Campus)

70-126 (Off-Campus)

70-127 (Off-Campus)

70-128 (Off-Campus)

70-129 (Off-Campus)

70-130 (Off-Campus)

70-131 (Off-Campus)

70-132 (Off-Campus)

70-133 (Off-Campus)

70-134 (Off-Campus)

70-135 (Off-Campus)

70-136 (Off-Campus)

70-137 (Off-Campus)

70-138 (Off-Campus)

70-139 (Off-Campus)

70-140 (Off-Campus)

70-141 (Off-Campus)

70-142 (Off-Campus)

70-143 (Off-Campus)

70-144 (Off-Campus)

70-145 (Off-Campus)

70-146 (Off-Campus)

70-147 (Off-Campus)

70-148 (Off-Campus)

70-149 (Off-Campus)

70-150 (Off-Campus)

70-151 (Off-Campus)

70-152 (Off-Campus)

70-153 (Off-Campus)

70-154 (Off-Campus)

70-155 (Off-Campus)

70-156 (Off-Campus)

70-157 (Off-Campus)

70-158 (Off-Campus)

70-159 (Off-Campus)

70-160 (Off-Campus)

70-161 (Off-Campus)

70-162 (Off-Campus)

70-163 (Off-Campus)

70-164 (Off-Campus)

70-165 (Off-Campus)

70-166 (Off-Campus)

70-167 (Off-Campus)

70-168 (Off-Campus)

70-169 (Off-Campus)

70-170 (Off-Campus)

70-171 (Off-Campus)

70-172 (Off-Campus)

70-173 (Off-Campus)

70-174 (Off-Campus)

70-175 (Off-Campus)

70-176 (Off-Campus)

70-177 (Off-Campus)

70-178 (Off-Campus)

70-179 (Off-Campus)

70-180 (Off-Campus)

70-181 (Off-Campus)

70-182 (Off-Campus)

70-183 (Off-Campus)

70-184 (Off-Campus)

70-185 (Off-Campus)

70-186 (Off-Campus)

70-187 (Off-Campus)

70-188 (Off-Campus)

70-189 (Off-Campus)

70-190 (Off-Campus)

70-191 (Off-Campus)

70-192 (Off-Campus)

70-193 (Off-Campus)

70-194 (Off-Campus)

70-195 (Off-Campus)

70-196 (Off-Campus)

70-197 (Off-Campus)

70-198 (Off-Campus)

70-199 (Off-Campus)

70-200 (Off-Campus)

70-201 (Off-Campus)

70-202 (Off-Campus)

70-203 (Off-Campus)

70-204 (Off-Campus)

70-205 (Off-Campus)

70-206 (Off-Campus)

70-207 (Off-Campus)

70-208 (Off-Campus)

70-209 (Off-Campus)

70-210 (Off-Campus)

70-211 (Off-Campus)

70-212 (Off-Campus)

70-213 (Off-Campus)

70-214 (Off-Campus)

70-215 (Off-Campus)

70-216 (Off-Campus)

70-217 (Off-Campus)

70-218 (Off-Campus)

70-219 (Off-Campus)

70-220 (Off-Campus)

70-221 (Off-Campus)

70-222 (Off-Campus)

70-223 (Off-Campus)

70-224 (Off-Campus)

70-225 (Off-Campus)

70-226 (Off-Campus)

70-227 (Off-Campus)

70-228 (Off-Campus)

70-229 (Off-Campus)

70-230 (Off-Campus)

70-231 (Off-Campus)

70-232 (Off-Campus)

70-233 (Off-Campus)

70-234 (Off-Campus)

70-235 (Off-Campus)

70-236 (Off-Campus)

70-237 (Off-Campus)

70-238 (Off-Campus)

70-239 (Off-Campus)

70-240 (Off-Campus)

70-241 (Off-Campus)

70-242 (Off-Campus)

70-243 (Off-Campus)

70-244 (Off-Campus)

70-245 (Off-Campus)

70-246 (Off-Campus)

70-247 (Off-Campus)

70-248 (Off-Campus)

70-249 (Off-Campus)

70-250 (Off-Campus)

70-251 (Off-Campus)

70-252 (Off-Campus)

70-253 (Off-Campus)

70-254 (Off-Campus)

70-255 (Off-Campus)

70-256 (Off-Campus)

70-257 (Off-Campus)

70-258 (Off-Campus)

70-259 (Off-Campus)

70-260 (Off-Campus)

70-261 (Off-Campus)

70-262 (Off-Campus)

70-263 (Off-Campus)

70-264 (Off-Campus)

70-265 (Off-Campus)

70-266 (Off-Campus)

70-267 (Off-Campus)

70-268 (Off-Campus)

70-269 (Off-Campus)

70-270 (Off-Campus)

70-271 (Off-Campus)

70-272 (Off-Campus)

70-273 (Off-Campus)

70-274 (Off-Campus)

70-275 (Off-Campus)

70-276 (Off-Campus)

70-277 (Off-Campus)

70-278 (Off-Campus)

70-279 (Off-Campus)

70-280 (Off-Campus)

70-281 (Off-Campus)

70-282 (Off-Campus)

70-283 (Off-Campus)

70-284 (Off-Campus)

70-285 (Off-Campus)

70-286 (Off-Campus)

70-287 (Off-Campus)

70-288 (Off-Campus)

70-289 (Off-Campus)

70-290 (Off-Campus)

70-291 (Off-Campus)

70-292 (Off-Campus)

70-293 (Off-Campus)

70-294 (Off-Campus)

70-295 (Off-Campus)

70-296 (Off-Campus)

70-297 (Off-Campus)

70-298 (Off-Campus)

70-299 (Off-Campus)

70-300 (Off-Campus)

- Bldg. 100**
Classrooms:
102A
102B
103A
106
109
110
111
114
115
116
117
120A
121A
123A
123B
125
126
127
128
129
130

- Bldg. 60**
Adult Re-entry
A.R.C.
Student Employment Services
- Bldg. 60 Upstairs**
ASGC Board Room
Common Ground
Student Affairs
- Bldg. 10**
Admissions & Records
Assessment & Testing
College Cashier
College & Community Relations
College Conference Room
College Planning & Institutional Effectiveness
Counseling Center
Deans Offices
Financial Aid
International Student Counseling Office
Instructional Operations
Mail Room & Business Communications Office
President/Vice-Presidents Offices
Student Activities Window
Transfer Center
Veterans Affairs

GROSSMONT
COLLEGE

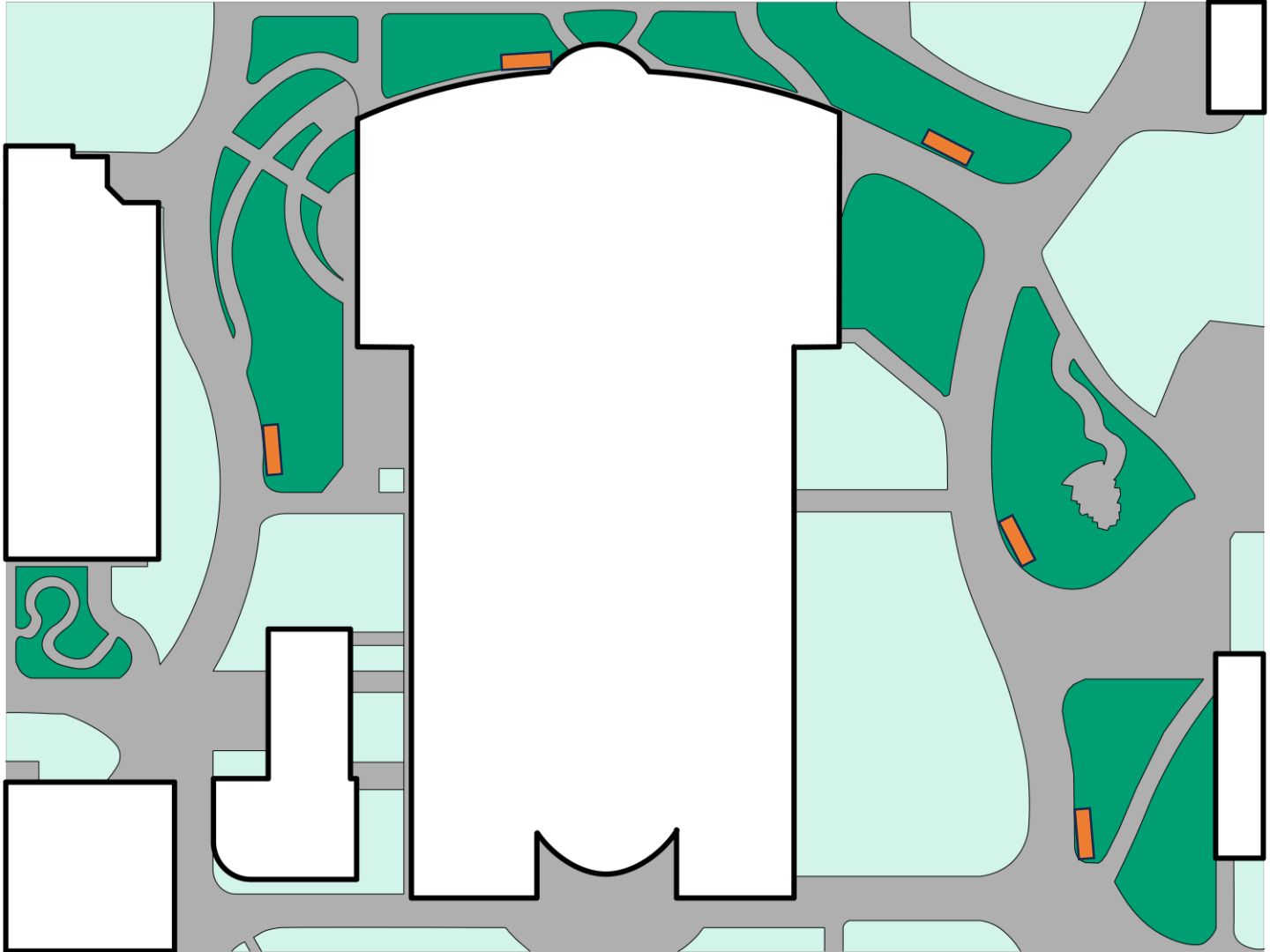


Close-up View of Nature Trail Station Locations in Central Campus



- | | |
|-------------------------------|----------------------|
| 1) Trail Information/Overview | 4) Chaparral |
| 2) Coastal Sage Scrub | 5) Riparian |
| 3) Oak Woodland | 6) Pollinator Garden |

Detailed Graphical Map of Trail





Project Tasks

- Refurbish and replant missing plants, additional plants in all garden areas
- Identify and replace incorrect botanical signs
- Identify Nature Trail Stations
- ***Design interpretive wayside signs for each station***
- Build project web site, including audio recordings and translations into most common languages on campus
- Order and install signs

Wayside Interpretive Exhibit Signage

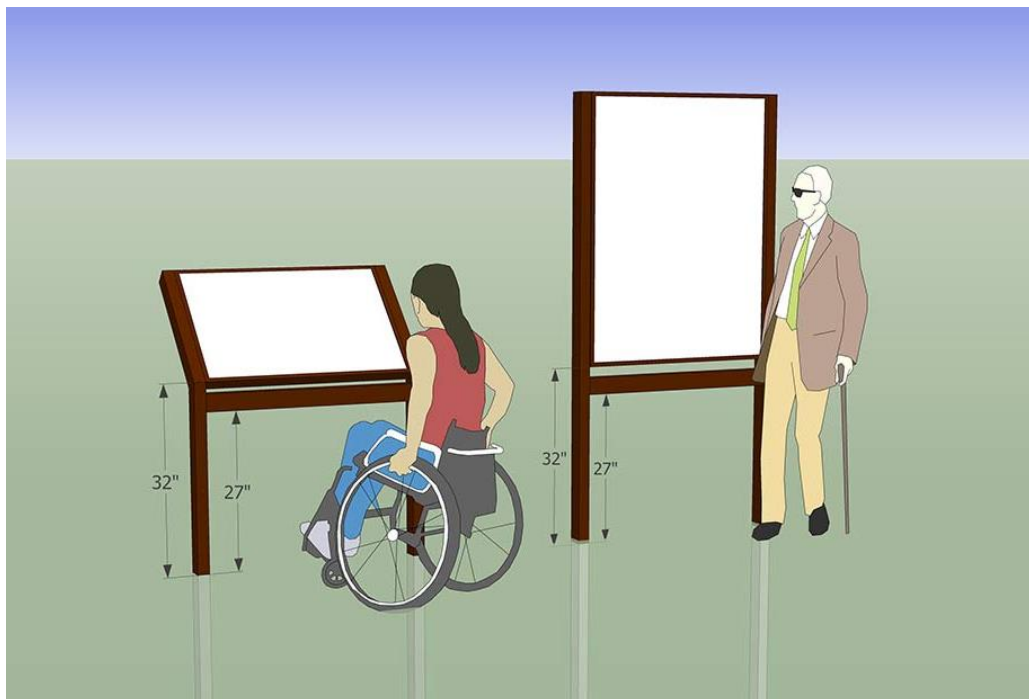
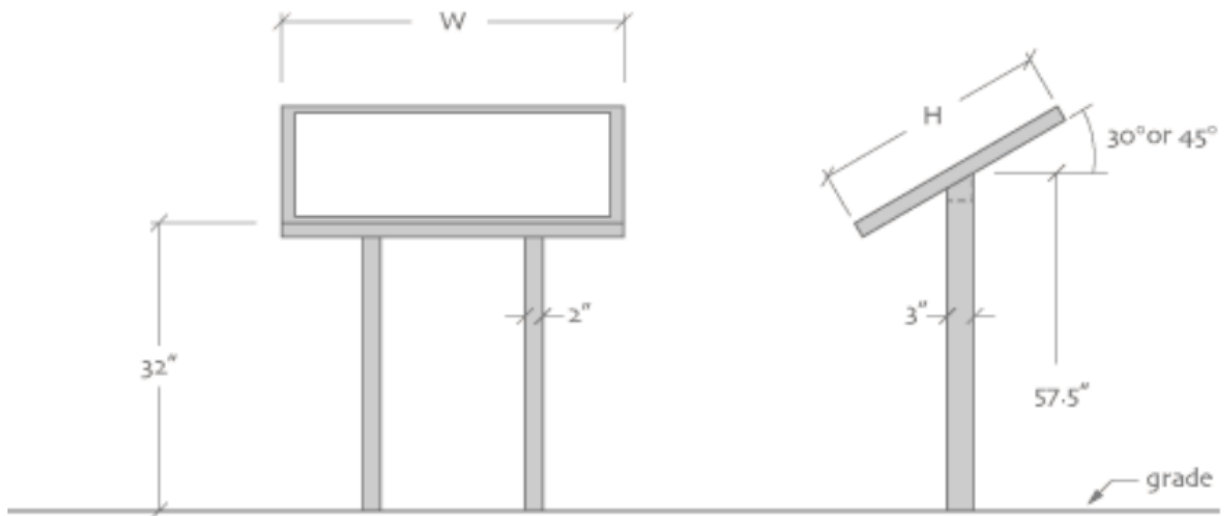


NPS Style Exhibit Bases

The National Park Service uses two “wayside interpretive exhibit” base styles – “traditional low-profile” and “cantilever low-profile.” Our NPS Style exhibit bases have a full metal backing and are made for use with 1/8" thick sign panels. Standard finish is a black powder coat. Custom sizes, finishes, and surface-mount options are available (45-degree angle is standard, 30-degree is optional). The bases are constructed of 10% recycled aluminum extrusion. The exhibit base is used with frames that are 18" to 24" high and 24," 36," and 42" wide. The interpretive sign panels are easily installed by removing the top section of the frame, inserting the sign panel, and replacing the top section. All of these mountings can be in-ground or surface mounted.

As shown from [Envirosigns Interpretive Solutions](#)

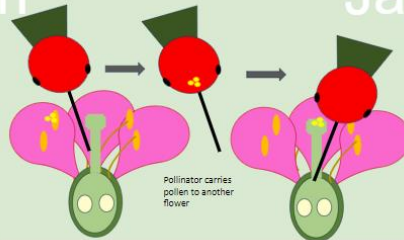
Accessible Design Features



Tentative Design: Pollinator Garden

Pollinator Garden

Most flowering plants cooperate with animals to reproduce. The pollen transfer fertilizes the eggs, allowing the plant to make fruits and seeds, which contain the developing offspring.



Jardin Polinizadores

Plantas florizadas... cooperate with animals to reproduce. The pollen transfer fertilizes the eggs, allowing the plant to make fruits and seeds, which contain the developing offspring.



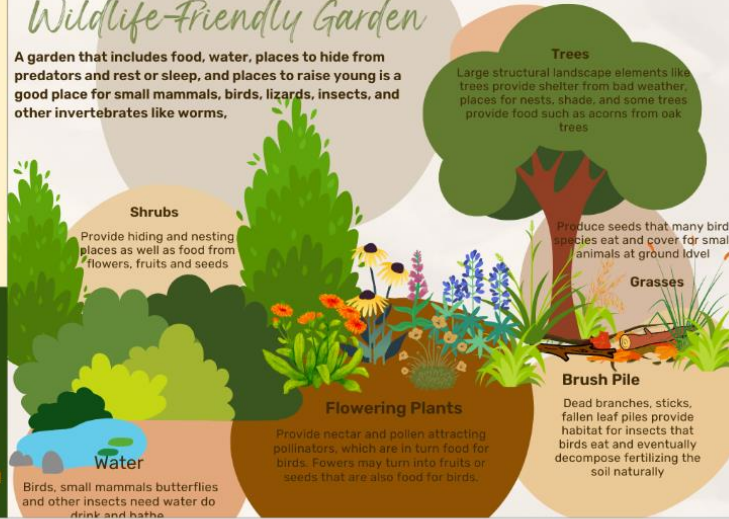
Butterfly/Mariposa



Moth/Polilla

Wildlife-Friendly Garden

A garden that includes food, water, places to hide from predators and rest or sleep, and places to raise young is a good place for small mammals, birds, lizards, insects, and other invertebrates like worms.



Native plants need little water and no fertilizer or pesticides. They are the base of the food web, allowing all kinds of animals to live around them

Plantas nativas ...and no fertilizer or pesticides. They are the base of the food web, allowing all kinds of animals to live around them

Grossmont logo

For more information about the plants in this garden, an audio tour, Arabic translation, and more, visit this web site:

QR code

Audubon logo

FACILITIES COMMITTEE AGENDA

1. Welcome/Introductions - Jennifer
2. Agenda – Additions/Deletions – Jennifer
3. Approve Meeting Minutes – Jennifer
4. 5-Minute Public Comment – Jennifer
5. Constituency Updates – Jennifer
 1. Admin Association
 2. Classified Senate
 3. Academic Senate
 4. ASGC
6. Nature Garden Signs – Bonnie Ripley
7. **FPR update - Loren**
8. Construction Timeline and Impacts - Loren
9. Constituency Group Time - Jennifer

DATE 11/1/23

FPR Section 1 Received

FPR#	Name of FPR Project	Description
24-01	Mental Health	Remodeling current space to add at least two offices and one storage.
24-02	Welcome Desk	Welcome Desk/Information Station at the entrance of Building 10 to welcome students
24-03	Reflection Room	A space that fosters reflection, meditation, and contemplation, providing
24-04	Chemistry Whiteboard	Whiteboard installed on the brick wall in the second-floor hallway in building 30, outside of the chemistry faculty
24-05	Softball Grass	Removal of all grass from the foul area of the softball field and in front of the dugouts.
24-06	Chemistry Cabinet for Techs	Repair or replace chemical cabinets in the tech work room
24-07	Chemistry Cabinet for Labs	Repair the back side of the sink cabinets
24-08	Fume Hood Bars	Replace the fume hood instrument bars
24-09	Bio Cabinets 30-128	Bldg 30-128 biology lab need more upper cabinet space above counter.
24-10	Nature Trail	Add water bars on the nature trail.
24-11	Bio Chairs 30-128 & 154	Replace stools with chairs with backs.
24-12	Softball Foul Lines	
24-13	Martha	2nd floor of Tech turned into student serving programs such as Justice Scholars, Umoja/A2Mend, Puente, Deram Center & Jewish Family Service. Need electrical, lighting, painting, hyflex, glass doors, flooring, signage, new furniture, CPUs
24-14	Convert 29A to Lab	Convert storage space to student lab space.

FPR Form 2

8) **FMO Impact:** Will your project require extensive labor or time from Facilities, Maintenance, & Operations staff?

- Yes
- No
- Unsure

9) **Benefit and Impact on Students:** How will this resource impact students' learning and/or experience (at the course/program/service level and/or engagement level)?

10) **Benefit and Impacts to the College Campus:** (How will this project enhance or impact other college programs, services, and/or operations?)

11) **Project support:** Does your project support one or more of the following? If so, please explain.

- College or District Facilities Master Plan _____
- Sustainability Impact _____
- ADA accessibility _____

Director's Report

TOTAL ESTIMATE COST	\$0	Including Public Works & Engineering
POSSIBLE COST REDUCTION	\$0	
TOTAL COST WITH REDUCTION	\$0	
Possible Criteria Scores: 0-5 with 5 the highest score		
(1) CONSTRUCTION IMPACT ON STUDENTS/STAFF	0	
(2) CONTINUAL IMPACT ON FMO	0	
(3) CONSTRUCTION IMPACT ON FMO	0	
(4) PROJECT PHYSICAL FEASIBILITY	0	
(5) PROJECT SUPPORT FEASIBILITY	0	
(6) COST FEASIBILITY	0	
(7) PROJECT START/FINISH FEASIBILITY	0	
NOTES		
Impact Score	0 through 4 (0= lowest, 4= highest)	
Feasibility Score	0 through 4 (0= lowest, 4= highest)	
Public Bid	0	
DSA	0	
Gafcon	0	
Proj. Manager	0	
In-House	0	
Contractor	0	
Join Projects	0	

FPR - Facilities Project Request Scorecard - Facilities Committee

Project Title:

FC Member:

Possible Criteria Scores: 0-5 with 5 the highest score

REFER TO QUESTION	CRITERIA	CRITERIA SCORE
Benefits and Impacts		
A	3,4,9 Direct/indirect benefit for students	0
B	3,4,9 Direct/indirect impact on students (0 = Impact, 5 = No Impact)	0
C	3,4,10 Benefit for other depts., services, programs	0
D	3,4,10 Impact on other depts., services, programs (0 = Impact, 5 = No Impact)	0
E	5 Mission Priority	0
F	5 Strategic Goals	0
Project Support		
G	6 Legal Mandate	0
H	6 Program/College Accreditation Criteria	0
I	6 Health/Safety/OSHA Priorities	0
J	6 Critical Threshold of Educational & Support Services	0
K	6 Essential Operations	0
L	6 College or District Facilities Master Plan	0
M	6 Sustainability Impact	0
N	6 ADA Accessibility	0
Budget		
O	12 Potential/Recommended funding source	0
P	12 One-Time Cost Effectiveness	0
Q	12 Projected Long-Term Effectiveness	0
R	12 Effective Life-Cycle (Replacement Time)	0
S	12 Cost Feasibility	0
Timeline		
T	7,13 Urgent Need	0
U	7,13 Project Start/Finish Feasibility	0
		Project Total Score Out of %100
Comments:		0
Facilities Director Report		
Director's (1)	Construction impact on students/staff (0 = Impact, 5 = No Impact)	0
Director's (2)	Continual impact on FMO (0 = Impact, 5 = No Impact)	0
Director's (3)	Construction impact on FMO (0 = Impact, 5 = No Impact)	0
Director's (4)	Project Physical Feasibility	0
Director's (5)	Project Support Feasibility	0
Director's (6)	Cost Feasibility	0
Director's (7)	Project Start/Finish Feasibility	0
		Project Total Score Out of %100
Comments:		0

FACILITIES COMMITTEE AGENDA

1. Welcome/Introductions - Jennifer
2. Agenda – Additions/Deletions – Jennifer
3. Approve Meeting Minutes – Jennifer
4. 5-Minute Public Comment – Jennifer
5. Constituency Updates – Jennifer
 1. Admin Association
 2. Classified Senate
 3. Academic Senate
 4. ASGC
6. Nature Garden Signs – Bonnie Ripley
7. FPR update - Loren
8. **Construction Timeline and Impacts - Loren**
9. Constituency Group Time - Jennifer

DATE 11/1/23



GROSSMONT
COLLEGE

Math, Science & Career Tech Complex Phase 2-Building 36



GROSSMONT
AND
CUYAMACA
COMMUNITY COLLEGES



GROSSMONT-CUYAMACA
COMMUNITY COLLEGE DISTRICT

COMING IN WINTER 2023

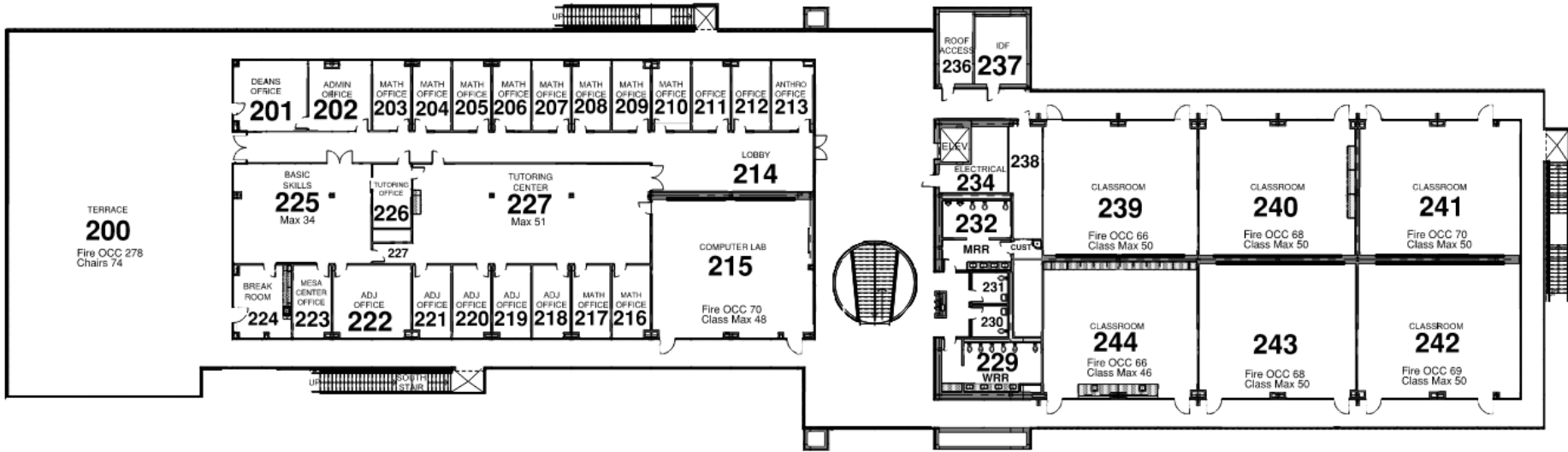


Facilities Impact Update April 2023



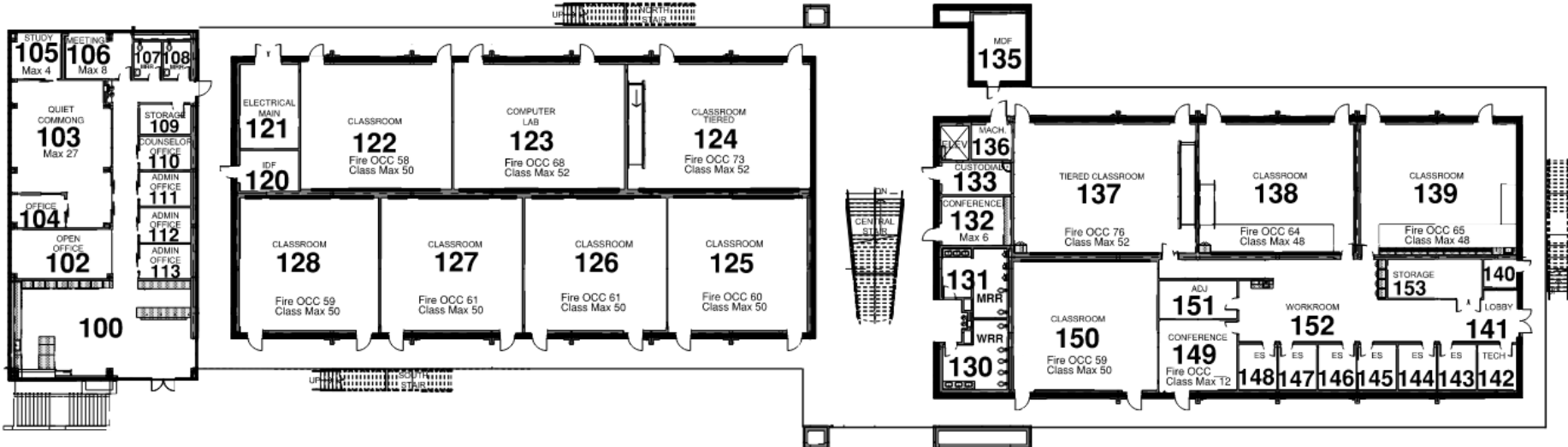
Building 36 Math and Earth Science Complex



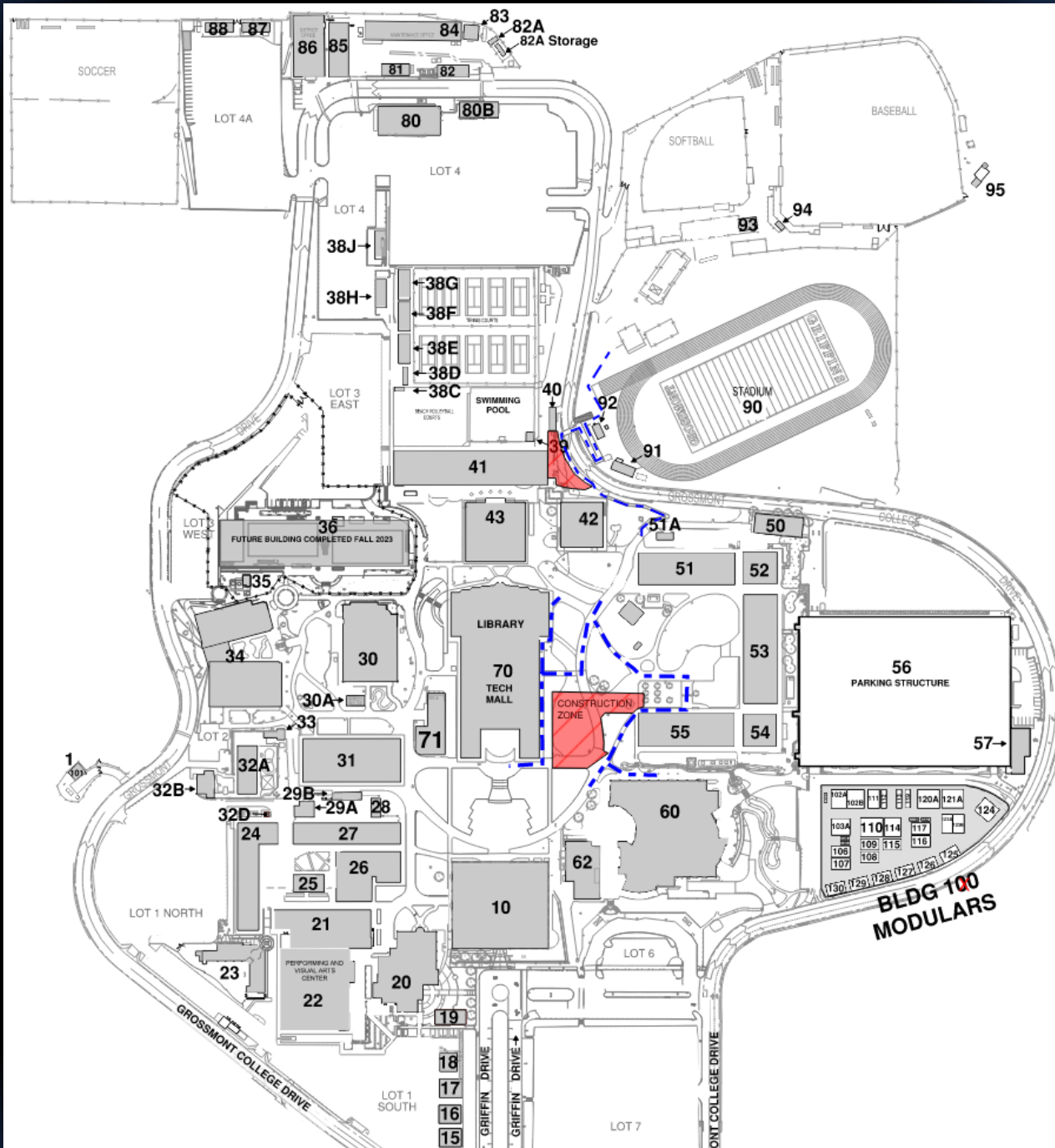


**BUILDING 36
SECOND FLOOR**

Bldg 36 Floorplan



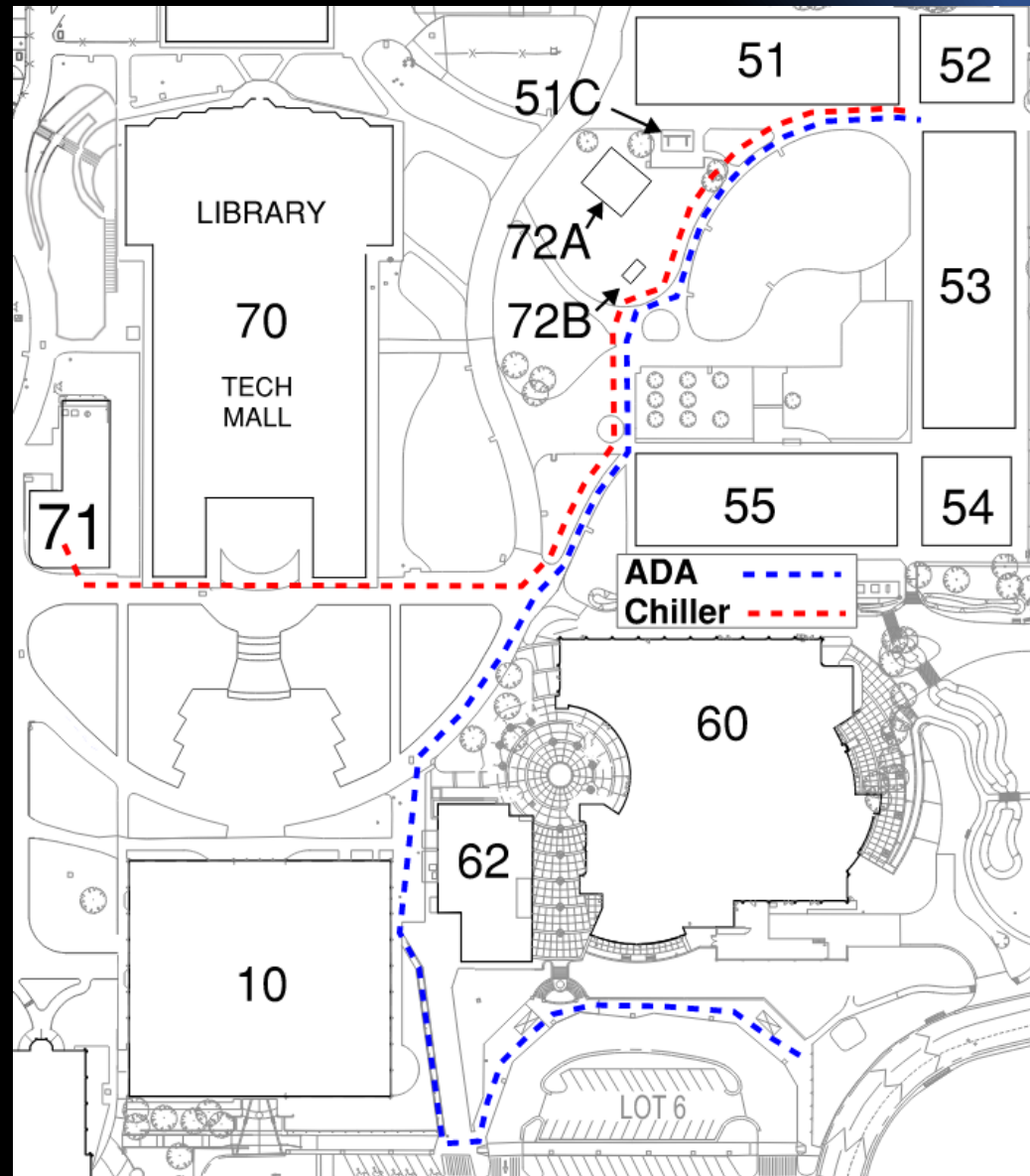
**BUILDING 36
FIRST FLOOR**



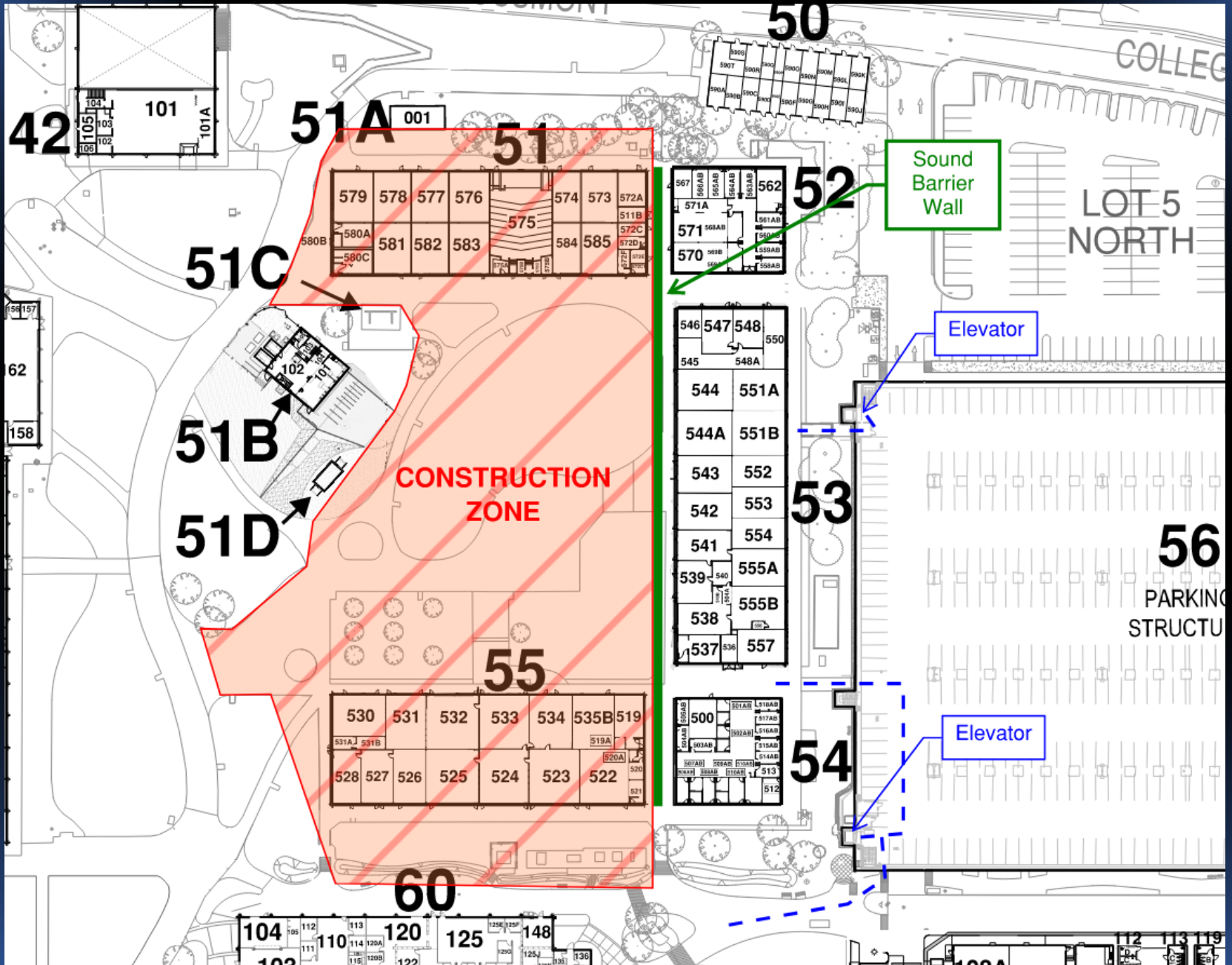
Bldg 52-54 Project

23.24 Projects

- Main Chiller extension to service Bldgs 51, 53 and 55
- Cosmetic upgrades to Bldgs 52-54
- Fan coil replacements in Bldgs 53 and 54
- Data and Power rerouting to Bldg 50
- Power rerouting to Bldg 54
- Installation of new electrical PME switches for Bldgs 51 and 55
- ADA concrete upgrades from the 500 complex to the bus stop area



Bldg 51/55 Renovation



FACILITIES COMMITTEE AGENDA

1. Welcome/Introductions - Jennifer
2. Agenda – Additions/Deletions – Jennifer
3. Approve Meeting Minutes – Jennifer
4. 5-Minute Public Comment – Jennifer
5. Constituency Updates – Jennifer
 1. Admin Association
 2. Classified Senate
 3. Academic Senate
 4. ASGC
6. Nature Garden Signs – Bonnie Ripley
7. FPR update - Loren
8. Construction Timeline and Impacts - Loren
9. **Constituency Group Time - Jennifer**

DATE 11/1/23

WELCOME TO THE FACILITIES COMMITTEE

The best way to contact FMO is by email

Grossmont.FMO@gcccd.edu

For maintenance, grounds, custodial and operation needs

Colleen Parsons, Ryan Althaus, Bill Roessner, Pepe Levy, Joel Lopez

Grossmont.restrooms@gcccd.edu

For restrooms that need attention

FMO phone is not monitored 24/7

619-644-7594