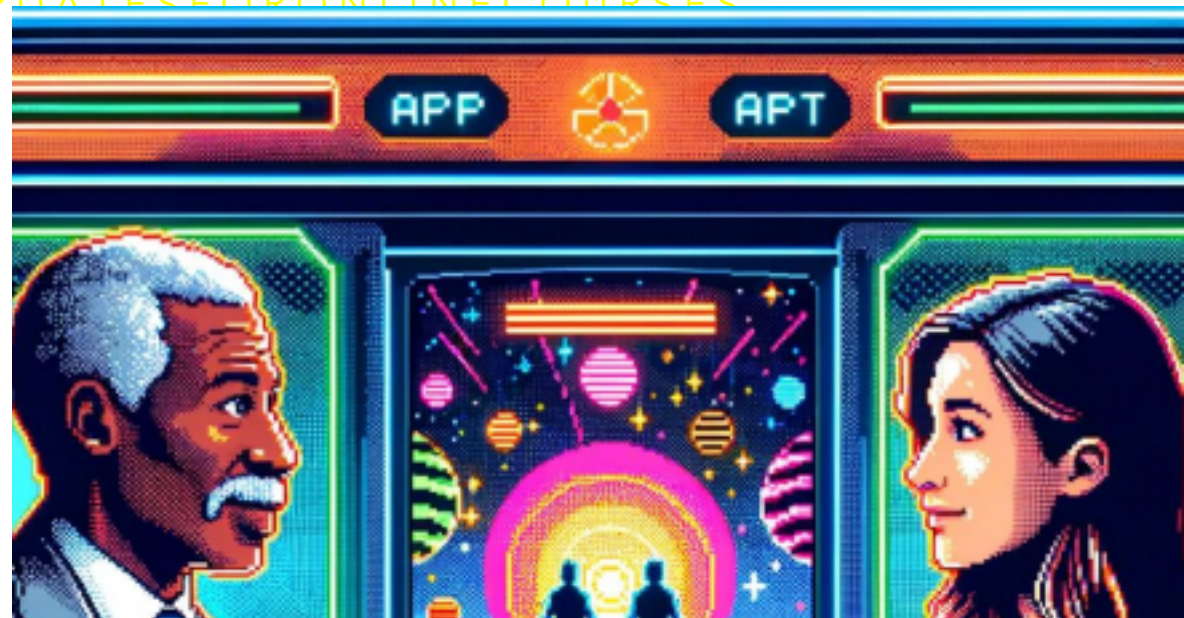


Regular and
Substantive
Interaction

2023 UPDATES FOR ONLINE COURSES

What is RSI?

- Regular and Substantive Interaction (RSI) refers to a regulatory requirement in U.S. higher education which mandates consistent and meaningful engagement



between instructors and students in online learning environments. This interaction, which must be academically focused and initiated by instructors, differentiates self paced courses and instructor-led online courses, impacting federal financial aid eligibility for institutions.

	<i>Old Definition</i>	<i>New Definition (As of 2021/2022)</i>
--	-----------------------	---

<p><i>Distance Education</i></p>	<p>Originally focused more on the geographical separation of teachers and students, usually implying that interaction would be asynchronous.</p>	<p>Now incorporates more nuanced understandings of technology's role, including synchronous interactions and a variety of media. It's not just about geographic distance but also about how educational content is delivered and interacted with.</p>
<p><i>Regular Substantive Interaction</i></p>	<p>Traditionally, this often meant sporadic or scheduled contact between students and instructors for the purpose of instruction, but the terms were not strictly defined.</p>	<p>The new definition places greater emphasis on the frequency, type, and quality of interactions between students and instructors. It also requires that instructors initiate interaction to improve learning, rather than just being responsive.</p>

THURSDAY, 1/18 AGENDA

PLAYING THE GAME & CUSTOMIZING YOUR WORLD



9:30-11AM REGULAR AND SUBSTANTIVE INTERACTION (RSI)

Facilitators: Bri Brown, Adelle Roe, Dawn Heuft, and Amber Toland Perry

Description: In this session we will review the recent Title V changes to Regular and Substantive Interaction (RSI) and share a variety of samples and tools that can be used to meet the requirements and that can be popped into your courses today! Come get some ideas on how to increase RSI and student engagement in your courses that can promote positive relationships both among students and between students and the instructor!



Announcements

- Regularly (at least once per week) post updates, insights, or reminders pertaining to course content, fostering continuous engagement.
- Post an announcement to clarify a sticky concept or summarize student feedback results.
- Keep in mind that this is a perfect place to support students AND publicize RSI to accreditors and evaluators.

Announcements

A generic announcement that can be repurposed semester over semester is okay:

Hi all! Here's a handy Mnemonic for this week's readings:

Mitosis: "Makes" identical cells. Think of the "t" in mitosis as standing for "two" — it results in two identical daughter cells.

Meiosis: "Makes" gametes or sex cells. Think of the "e" in



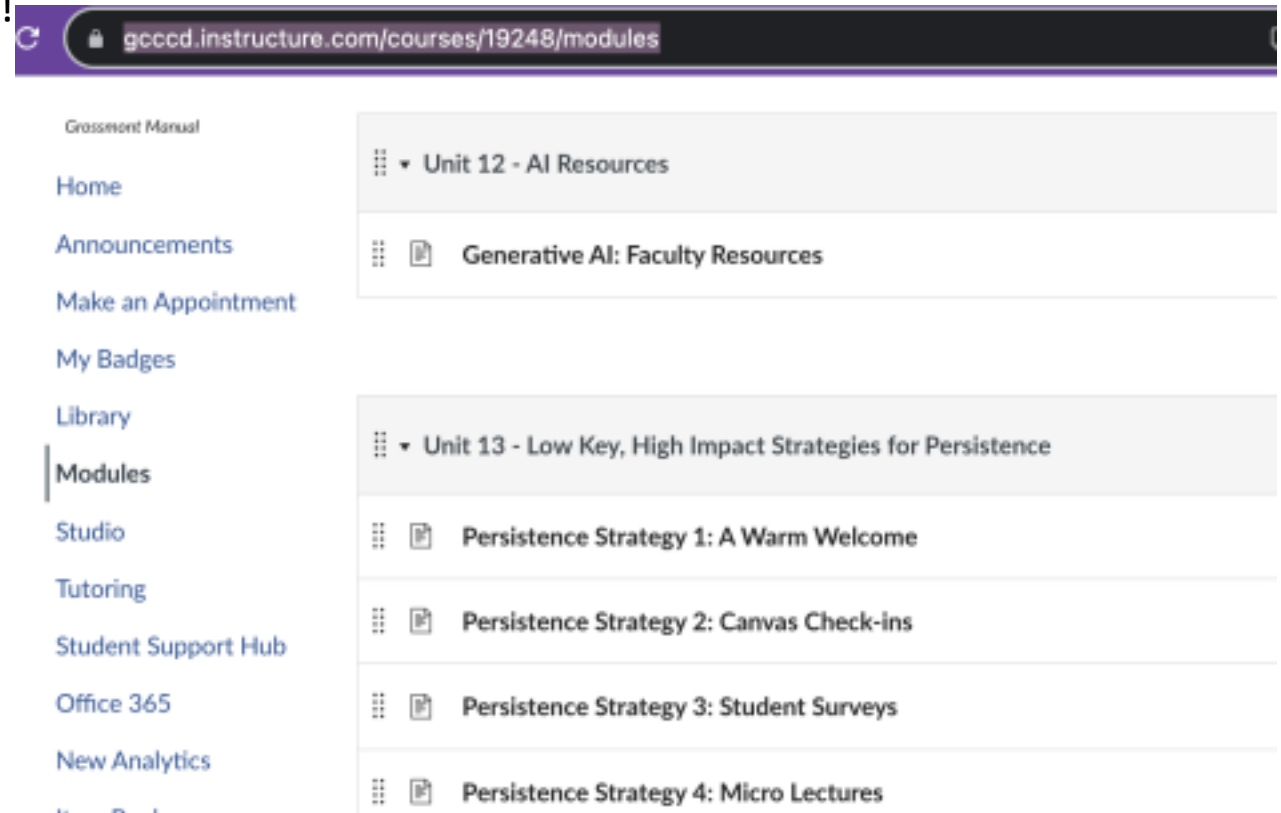
meiosis as standing for "egg" or "sperm."

Even better, keep it current and show evidence of RSI:

During Tuesday's office hours via TechConnect Zoom, a student in our class asked a fantastic question about the recently discovered critical component (acetyl) in the chromosome pairing process during meiosis. She asked if the findings are likely to translate to humans. I answered yes, as many basic aspects of meiosis, including the construction of the synaptonemal complex involved in this process, are shared between worms and humans!

Resources

- Please share the professional development opportunities and resources that are being built for faculty!
- [GC CANVAS RESOURCES](#)
- [WINTER CAMP](#) (Jan 17-18, online focused, counts for Flex credit)



The screenshot shows a web browser window with the address bar displaying `gcccd.instructure.com/courses/19248/modules`. The page content is divided into two main sections: a left-hand navigation menu and a right-hand content area. The navigation menu includes links for "Grossmont Manual", "Home", "Announcements", "Make an Appointment", "My Badges", "Library", "Modules" (which is currently selected), "Studio", "Tutoring", "Student Support Hub", "Office 365", and "New Analytics". The right-hand content area displays two units. The first unit is "Unit 12 - AI Resources", which contains a resource titled "Generative AI: Faculty Resources". The second unit is "Unit 13 - Low Key, High Impact Strategies for Persistence", which contains four resources: "Persistence Strategy 1: A Warm Welcome", "Persistence Strategy 2: Canvas Check-ins", "Persistence Strategy 3: Student Surveys", and "Persistence Strategy 4: Micro Lectures".

