

HOW TO READ COURSE OFFERINGS

Symbols at the bottom of each page indicate G.E. courses, prerequisites, nondegree credit courses, etc. See legend at the bottom of each page.

	Dept.	Course Number	Title	Room Number	Instructor	Unit Value
#	ENGL-110	COLLEGE COMPOSITION				3.0
	1234	12:00PM-1:50	MTWTH	51-584	M.Donnelly	
*	BIO-110	ENVIRONMENTAL BIOLOGY				4.0
		<i>Some weekend field studies may be held</i>				
	5678	8:00AM- 9:50 and 10:00AM-11:50	MTWTH MTWTH	30-112 36-325B	M.Golden	

Section Number - this is the number used to register for classes

Time & day of class - all times and days listed under a section number apply to that specific section of a course

Bold color indicates an evening class

Notes that apply to all sections of a course

SPECIAL CLASS LOCATIONS

All special class locations are located at Grossmont College unless otherwise noted.

BSBL	Baseball Field	—	Cuyamaca College
32-CDC	Child Development Center	—	900 Rancho San Diego Pkwy, El Cajon, CA 92019
CRTS	Tennis Courts	—	El Cajon Valley High School
HOSP	Hospital	—	1035 E Madison Ave, El Cajon, CA 92021
40-POOL	Swimming Pool	—	Grossmont Hospital
RAMP	Ski Ramp	—	5555 Grossmont Center Dr., La Mesa, CA 91942
SFBF	Softball Field	—	Mission Trails Regional Park
TBA	To Be Arranged	—	1 Father Junipero Serra Trail, San Diego, CA 92119
TFF	Track & Football Field	—	Scripps Clinic
41-121	Training Room	—	10666 N. Torrey Pines Rd, La Jolla, CA 92037
TRCK	Track	—	West Hills High School
70-234	Tutoring Center	—	8756 Mast Blvd., Santee, CA 92071
VBC	Sand Volleyball Courts		
WEB	Internet Course		
70-066	Distance Learning Room		



GENERAL

Math Pathways



Unit Value in Parenthesis

Please see a counselor prior to registering for a Math class.

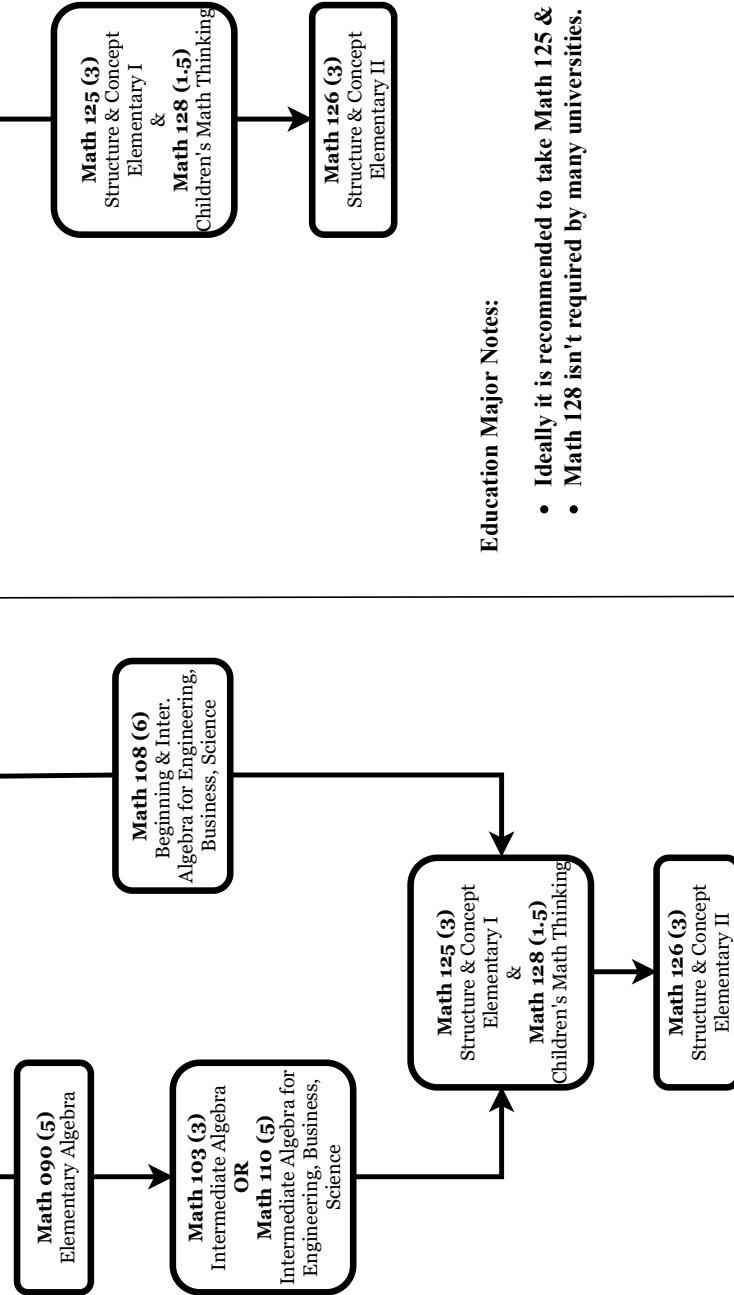
Grossmont College Mathematics Department

Math Pathways
General



EDUCATION

Math Pathways



Education Major Notes:

- Ideally it is recommended to take Math 125 & Math 128 concurrently.
- Math 128 isn't required by many universities.

Please see a counselor prior to registering for a Math class.

Unit Value in Parenthesis

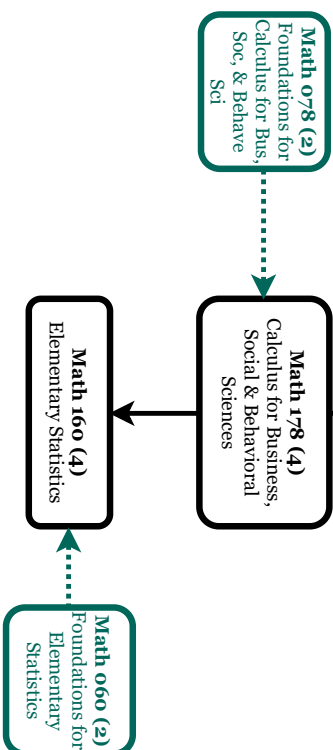
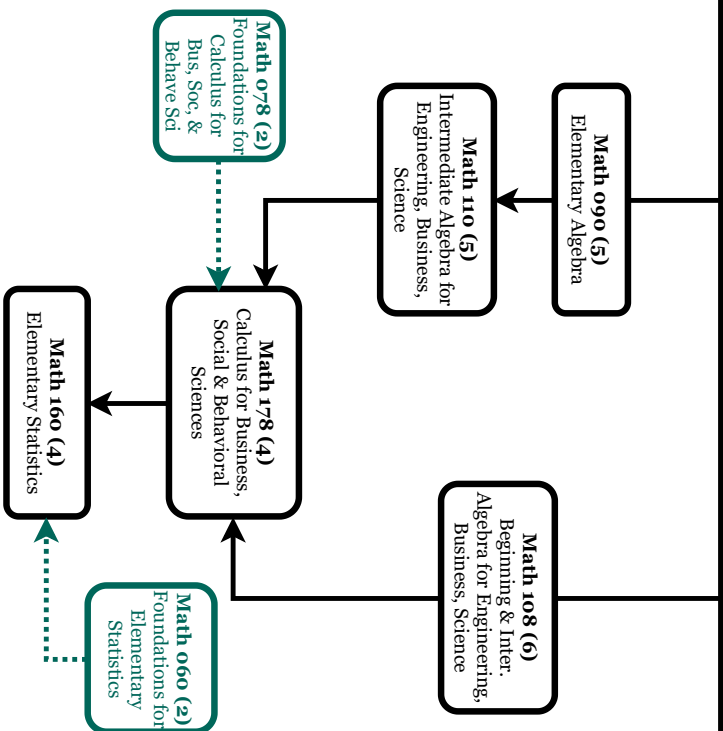
Grossmont College Mathematics Department

Math Pathways
Education



BUSINESS

Math Pathways



Business Major Notes:

- It is recommended to take Math 178 before taking Math 160.
- Many Business majors do not need BOTH Math 178 & Math 160.
- Some universities REQUIRE Math 180 for Business majors & won't accept Math 178.

Please note some students will be placed in "0" support classes that will be taken concurrently.

Please see a counselor prior to registering for a Math class.

Unit Value in Parenthesis

Grossmont College Mathematics Department

Math Pathways



Please see a counselor prior to registering for a Math Class.

Grossmont College Mathematics Department

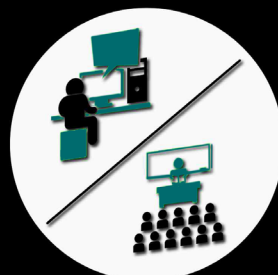
Grossmont College Class Formats for Summer 2021



Traditional Online (DE)
(Asynchronous)



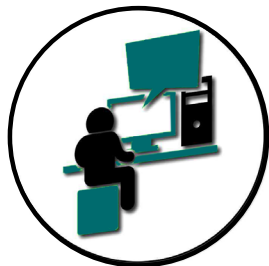
Remote (ERT)
(Synchronous)



Hybrid
(Face-to-Face + Online)



Face-to-Face
(On Campus)



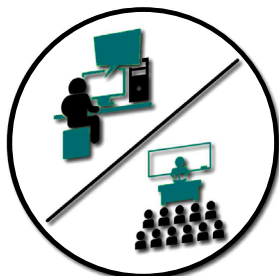
Traditional Online (DE) (Asynchronous)

In an online class, all course activity occurs online; there are no required real-time or on-campus meetings. All content is delivered in Canvas. Coursework has due dates as set by the instructor, but can be completed at any time before the due date according to an individual student's schedule. Quizzes or tests may have a shortened period (usually a week's time) during which students will need to complete them.



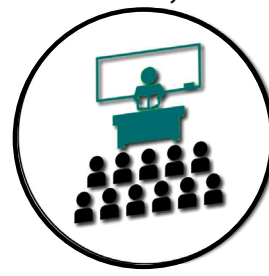
Remote (ERT) (Synchronous)

In a remote online class, there are some required real-time online meetings (via Zoom) that occur on scheduled days and times, but, all course activity occurs online. There are no required on-campus meetings. Course content can be delivered both in Canvas and synchronously in Zoom. Quizzes, tests, and other course-work may be completed outside of the online Zoom meetings by the due date set by the instructor.



Hybrid (Face-to-Face + Online)

In a hybrid class, course activity occurs both online and face-to-face on-campus; both the online and on-campus portion are required. The on-campus meetings occur at scheduled days and times. All online content is delivered in Canvas and Zoom.



Face-to-Face (On Campus)

In an on-campus class, course activity occurs face-to-face at Grossmont College or a designated physical site. The course meetings occur at scheduled days and times. Instructors may still use Canvas or other software to enhance (like posting the syllabus or hosting a discussion board) the class outside of the face-to-face meetings.

