


# HOW TO READ COURSE OFFERINGS

## COURSE SCHEDULE SAMPLE

<div>Symbols Indicate G.E. courses, prerequisites, nondegree credit courses, etc. See legend at the bottom of each page.</div>			<div>Face To Face (F2F) On Campus </div>		
Department	Course Number	Title	Room Number / Location	Instructor	Unit Value
# ENGL-110	COLLEGE COMPOSITION				3.0
1234	10:00AM-10:50	MWF	52-570	M. Donnelly	
* BIO-110	ENVIRONMENTAL BIOLOGY	<div>Note Applies to all sections of a course</div>			4.0
<i>Some Saturday field trips may be held</i>					
S	2236	<div>4:00-5:20PM and 5:30-6:45PM</div>	MW 30-112 MW 34-150	M. Golden	Month/Date
<div>Section Number Number used to register for classes</div>		<div>Time &amp; day of class All times and days listed under a section number apply to that specific section of a course.</div>			<div>Short-term dates</div>
<div>S Indicates a short-term class</div>		<div>Bold text indicates an evening class.</div>			

## SELF-SERVICE / WEB ADVISOR SAMPLE

Filters Applied:		Grossmont College	Not Online	The "Not Online" filter will include ERT courses that are remote "WEB" based instruction with required synchronous meeting days/times.	
Term	Section Name	Title	Dates	Location	Meeting Information
Summer	THTR-124D-9047	Thtr Wrkshop Lab: Prod Crew IV	00/00/00 - 00/00/00	Grossmont College	T, Th 12:00 AM - 12:00 PM 00/00/00 - 00/00/0000
			Location (bottom line) Bldg.-Rm # = on-campus		11 111 (LAB)

# FINAL EXAMINATION SCHEDULE - FALL 2021

ALL CLASSES ARE REQUIRED TO HAVE FINAL EXAMINATIONS. The schedule listed below is to be used as a **guide** in determining when a final exam will be given. **It is not possible to schedule finals for every class time.** For those students who have overlapping final exams, they are advised to work with their instructors to reschedule their exams.

**PLEASE NOTE: Final Exams begin on Monday, December 13, 2021.**

Days/Times of Regularly Scheduled Classes		Date/Time of Final Exam
		<b>MONDAY, DECEMBER 13</b>
M, MW, MWF or MTWTh	7:00, 7:25 or 7:30 a.m.	7:15 a.m. – 9:15 a.m.
M or MTWTh	8:00 or 8:15 a.m. or 8:30 a.m.	7:15 a.m. – 9:15 a.m.
M, MW or MWF	9:00 or 9:30 a.m.	9:25 a.m. – 11:25 a.m.
M or MTWTh	10:00 or 10:30 a.m.	9:25 a.m. – 11:25 a.m.
M only	11:00 a.m.	11:35 a.m. – 1:35 p.m.
M, MW, MTWTh or Daily	11:30 a.m., 12:00, 12:15 or 12:30 p.m.	11:35 a.m. – 1:35 p.m.
M or MW	1:00 or 1:30 p.m.	1:45 p.m. – 3:45 p.m.
M or Daily	2:00 or 2:30 p.m.	1:45 p.m. – 3:45 p.m.
M, MW or MWF	3:00 or 3:30 p.m.	3:55 p.m. – 5:55 p.m.
M or Daily	4:00 or 4:30 p.m.	3:55 p.m. – 5:55 p.m.
M or MW	5:00 or 5:30 p.m.	6:05 p.m. – 8:05 p.m.
M only	6:00 or 6:30 p.m.	6:05 p.m. – 8:05 p.m.
M or MW	7:00, 7:30 or 8:00 p.m.	8:15 p.m. – 10:15 p.m.
		<b>TUESDAY, DECEMBER 14</b>
TTh, TWTh or Daily	7:00, 7:25 or 7:30 a.m.	7:15 a.m. – 9:15 a.m.
T only	8:00 or 8:30 a.m.	7:15 a.m. – 9:15 a.m.
T, TTh or MTWTh	9:00 or 9:30 a.m.	9:25 a.m. – 11:25 a.m.
T only	10:00 or 10:30 a.m.	9:25 a.m. – 11:25 a.m.
T or TTh	11:00 or 11:30 a.m.	11:35 a.m. – 1:35 p.m.
T only	12:00 noon	11:35 a.m. – 1:35 p.m.
T only	12:30 or 2:00 p.m.	1:45 p.m. – 3:45 p.m.
T or TTh	1:00 or 1:30 p.m.	1:45 p.m. – 3:45 p.m.
T or TTh	3:00 or 3:30 p.m.	3:55 p.m. – 5:55 p.m.
T only	4:00 or 4:30 p.m.	3:55 p.m. – 5:55 p.m.
T or TTh	5:00, 5:15 or 5:30 p.m.	6:05 p.m. – 8:05 p.m.
T only	6:00 or 6:30 p.m.	8:15 p.m. – 10:15 p.m.
T or TTh	7:00, 7:30 or 7:45 p.m.	8:15 p.m. – 10:15 p.m.
T only	8:00 or 8:30 p.m.	8:15 p.m. – 10:15 p.m.
		<b>WEDNESDAY, DECEMBER 15</b>
W only	7:00 or 8:00 a.m.	7:15 a.m. – 9:15 a.m.
MW or WF	7:50, 8:00 or 8:30 a.m.	7:15 a.m. – 9:15 a.m.
W only	9:00, 9:30, 10:00 or 10:30 a.m.	9:25 a.m. – 11:25 a.m.
MW or MWF	10:00 or 10:30 a.m.	9:25 a.m. – 11:25 a.m.
WF, MW, or MTWTh	11:00 a.m.	11:35 a.m. – 1:35 p.m.
W	12:30, 1:00, 1:30 or 2:00 p.m.	1:45 p.m. – 3:45 p.m.
MW	2:00 or 2:30 p.m.	1:45 p.m. – 3:45 p.m.
W only	3:40 p.m.	3:55 p.m. – 5:55 p.m.
W or MW or MTWTh	4:00 or 4:30 p.m.	3:55 p.m. – 5:55 p.m.
W only	5:00, 5:30, 6:00 or 6:30 p.m.	6:05 p.m. – 8:05 p.m.
MW	6:00 or 6:30 p.m.	6:05 p.m. – 8:05 p.m.
W only	7:00 p.m.	8:15 p.m. – 10:15 p.m.
		<b>THURSDAY, DECEMBER 16</b>
Th or TTh	8:00 or 8:30 a.m.	7:15 a.m. – 9:15 a.m.
Th only	9:00 a.m. or 9:30 a.m.	9:25 a.m. – 11:25 a.m.
Th or TTh	10:00 or 10:30 a.m.	9:25 a.m. – 11:25 a.m.
Th only	11:00 a.m.	11:35 a.m. – 1:35 p.m.
Th or TTh	12:00 or 12:30 p.m.	11:35 a.m. – 1:35 p.m.
Th only	1:00 or 1:30 p.m.	1:45 p.m. – 3:45 p.m.
Th or TTh	2:00 or 2:30 p.m.	1:45 p.m. – 3:45 p.m.
Th only	3:00 or 3:30 p.m.	3:55 p.m. – 5:55 p.m.
Th or TTh	4:00 or 4:30 p.m.	3:55 p.m. – 5:55 p.m.
Th only	5:00 p.m.	6:05 p.m. – 8:05 p.m.
Th or TTh	6:00, 6:25 or 6:30 p.m.	6:05 p.m. – 8:05 p.m.
Th only	7:00 p.m.	8:15 p.m. – 10:15 p.m.
Th or TTh	8:00 p.m.	8:15 p.m. – 10:15 p.m.
		<b>FRIDAY, DECEMBER 17</b>
F only	7:00 a.m.	7:00 a.m. – 9:00 a.m.
F, MWF or Daily	8:00 a.m.	7:00 a.m. – 9:00 a.m.
F only	8:30, 9:00, 9:30, 10:00 or 10:30 a.m.	9:10 a.m. – 11:10 a.m.
F or MWF	11:00, 11:30a.m., 12:00 or 12:30 p.m.	11:20 a.m. – 1:20 p.m.
F, MF or WF	1:00, 1:30 or 2:00 p.m.	1:30 p.m. – 3:30 p.m.
F, MThF or Daily only	3:00 p.m.	3:40 p.m. – 5:40 p.m.
F only	6:00 or 6:30 p.m.	6:00 p.m. – 8:00 p.m.
		<b>SATURDAY, DECEMBER 18</b>
Saturday final is given during regular Saturday class hours		

See next page for more info about final exams.

Classes meeting at the times shown in the above schedule need to use the first hour of the week of the class as key to examination times. For example: classes meeting M or MTWTh at 10:00 a.m. or 10:30 a.m. would meet for the final examination Monday, December 13, 9:25 a.m.-11:25 a.m.; classes meeting T or TTh at 11:00 a.m. or 11:30 a.m. would meet for the final examination on Tuesday, December 14, 11:35 a.m.-1:35 p.m.

**SATURDAY CLASSES WILL HOLD EXAMINATIONS ON SATURDAY, DECEMBER 18, AT NORMAL CLASS HOURS. SHORT-TERM CLASSES WILL HOLD EXAMINATIONS ON THE LAST MEETING OF THE CLASS.**

The examination time of a combination lecture and laboratory course should be determined by the lecture. Laboratory examinations, if required, should be given prior to Finals Week. Such examinations should not be given in lieu of any final examination for the entire course.

For those students who have overlapping final exams, they are advised to work with their instructors to reschedule their exams. Each examination will be given in the regular classroom unless otherwise arranged by the instructor with approval of their dean and Instructional Operations.

In the event a severe illness or an emergency prevents a student from taking a final examination during the regularly scheduled time, instructors must be notified and the student must make up the examination as soon as possible. In all cases the illness or emergency must be verified.

## SPECIAL CLASS LOCATIONS

**All special class locations are located at Grossmont College unless otherwise noted.**

BSBL	Baseball Field
32-CDC	Child Development Center
CRTS	Tennis Courts
HOSP	Hospital
40-POOL	Swimming Pool
RAMP	Ski Ramp
SFBF	Softball Field
TBA	To Be Arranged
TFF	Track & Football Field
41-121	Training Room
TRCK	Track
70-234	Tutoring Center
VBC	Sand Volleyball Courts
WEB	Internet Course
70-066	Distance Learning Room

—	Cuyamaca College 900 Rancho San Diego Pkwy, El Cajon, CA 92019
—	El Cajon Valley High School 1035 E Madison Ave, El Cajon, CA 92021
—	Grossmont Hospital 5555 Grossmont Center Dr., La Mesa, CA 91942
—	Mission Trails Regional Park 1 Father Junipero Serra Trail, San Diego, CA 92119
—	Scripps Clinic 10666 N. Torrey Pines Rd, La Jolla, CA 92037
—	West Hills High School 8756 Mast Blvd., Santee, CA 92071

# LEARNING COMMUNITIES

## TAKE IT TO THE NEXT LEVEL

### Register today for a Fall 2021 link!

- Make powerful connections across multiple subjects
- Develop deeper relationships with fellow students
  - Knock out your General Ed requirements
- Benefit from a team of faculty there to support you

#### HIP HOP-ENGLISH LINK

Music 123: History of Hip Hop Culture M/W 11am-12:15pm (#9128) +  
English 120 M/W 9:30-10:45am (#3019)

#### WORLD HISTORY-ENGLISH LINK

History 101: Modern World History 100% Online (#5785) +  
English 120 100% Online (#3030)

#### MATH-ENGLISH LINK

Math 160: Statistics W/Th 10:00-11:50 am (#5992) +  
Math 060 T 10:00-11:50 am (#6266) +  
English 120 T/Th 12:30-1:45 pm (#4821)

#### Asian American Pacific Islander (AAPI)-Themed LINK

Counseling 120: College & Career Success T/Th 11-12:15 pm (#9194) +  
Ethnic Studies/Soc 114: Sociology of Minority Group Relations  
100% Online (#9728 or #9729)

#### UMOJA PROGRAM LINK

Coun 130: Study Skills & Time Management T 8-9:50am (#1440 or #9681) +  
Ethnic Studies/Hist 180: US Black Perspectives I T/Th 11-12:15 pm (#9710) +  
English 120 100% Online (#5866) +  
English 020 Th 12:30-1:20pm (#3588)

#### FYE PROGRAM LINKS

Counseling 120: College and Career Success T/Th 11am-12:15pm (#6077) +  
English 120 (#5853) T/Th 12:30-1:45pm +  
Ethnic Studies/Hist 119: U.S. Chicano/a Perspectives II  
100% Online (#9687 or #9213)

Counseling 120: College and Career Success M/W 9-10:15am (#6076) +  
English 120 (#3035) M/W 11am-12:15pm +  
English 020 Support (#3598) M 12:30-1:20pm +  
Ethnic Studies/Hist 119: U.S. Chicano/a Perspectives II  
100% Online (#9686 or #9211)

#### PUENTE PROGRAM LINKS

Counseling 120: College and Career Success  
T/Th 11am-12:15pm (#6075 or #9669) +  
English 120 T/Th 12:30-1:45pm (#5868)

Counseling 120: College and Career Success  
T/Th 9:30-10:45am (#9460 or #9680) +  
English 120 (#4817) T/Th 12:30-1:45pm +  
English 020 Support (#3590) T 2-2:50pm

For more info, contact Project Success Coordinator  
michelle.crooks@gcccd.edu or visit [www.grossmont.edu/ps](http://www.grossmont.edu/ps)



A

# Mashup Mix - Fall '21

## ENGLISH

English 120 (#3019)  
M/W 9:30-10:45 am  
Professor Deutsch

## HIP HOP

Music 123: History of  
Hip Hop Culture (#9128)  
M/W 11 am-12:15 pm  
Professors  
Cannon & Adao

*Listening to Hip hop and your favorite music to explore history and writing? Is that even allowed? Yes!*

In this Project Success learning community, you will dig into the origins and impacts of hip hop on our culture and world while exploring your own voice in analytical writing. Mix your own playlist of experience and ideas. Join an exciting community of learners by enrolling in these two GE courses this fall.

**Register on Self-Service today!**  
**For more info, visit the Project Success site: [www.grossmont.edu/ps](http://www.grossmont.edu/ps)**  
**or visit [www.grossmont.edu/ps](http://www.grossmont.edu/ps)**

## ENGLISH AS A SECOND LANGUAGE LINKED SECTIONS - FALL 2021

The following courses are linked courses. These courses are cohorts and must be taken concurrently because they are learning communities. For more information, please meet with a counselor or contact Sara Ferguson ESL Chair, at [sara.ferguson@gcccd.edu](mailto:sara.ferguson@gcccd.edu).

ESL 088 Literacy and Communication (6 Units) 6214 9:30 am – 12:25 pm TTH	with	ESL 088L Understanding and Speaking American English in College and Everyday Life (3 Units) 6215 12:35 pm – 1:50 pm MW
	and	ESL 088R Reading and Vocabulary for College and Everyday Life (3 Units) 6213 8:00 am – 9:15 am MW
ESL 088 Literacy and Communication (6 Units) 6212 9:30 am – 12:25 pm TTH	with	ESL 088L Understanding and Speaking American English in College and Everyday Life (3 Units) 6210 12:30 pm – 1:45 pm TTH
	and	ESL 088R Reading and Vocabulary for College and Everyday Life (3 Units) 6211 8:00 am – 9:15 am TTH
ESL 088 Literacy and Communication (6 Units) 6216 6:00 pm – 8:55 pm MW	with	ESL 088L Understanding and Speaking American English in College and Everyday Life (3 Units) 6218 7:30 pm – 8:45 pm TTH
	and	ESL 088R Reading and Vocabulary for College and Everyday Life (3 Units) 6217 6:00 pm – 7:15 pm TTH
ESL 098 Introduction to Academic English (6 Units) 6223 8:00 am – 10:55 am MW	with	ESL 098G Essential Grammar for Written and Spoken Comm. (3 Units) 6222 9:00 am – 10:15 am TTH
	and	ESL 098P Sounds and Rhythms of American English (3 Units) 6224 11:35 am – 12:50 pm MW
ESL 098 Introduction to Academic English (6 Units) 6229 9:30 am – 12:25 pm TTH	with	ESL 098G Essential Grammar for Written and Spoken Comm. (3 Units) 6228 8:00 am – 9:15 am TTH
	and	ESL 098P Sounds and Rhythms of American English (3 Units) 6231 1:30 pm – 2:45 pm TTH
ESL 098 Introduction to Academic English (6 Units) 6238 6:00 pm – 8:55 pm TTH	with	ESL 098G Essential Grammar for Written and Spoken Comm. (3 Units) 6239 6:00 pm – 7:15 pm TTH
	and	ESL 098P Sounds and Rhythms of American English (3 Units) 6240 7:30pm – 8:45 pm TTH



# MEAN, MEDIAN, & MOOD

## ENGLISH

English 120 (#4821)  
T/Th 12:30-1:45 pm  
Professor  
McGaughey-Gilreath



## STATS

Math 160 (#5992)  
W/Th 10:00-11:55 am +  
Math 060 Support  
(#6266)  
T 10:00-11:50 am  
Professor Steel

**Take them together with an interesting theme  
in Fall 2021 and get these GEs out of the way!**

How can you combine the insights of English and math to better understand social phenomena? In this themed Project Success learning community, you will explore both constructive and damaging social trends through a multidisciplinary perspective. The semester will end with an "action project" where students will critically explore local, national, and global trends. Also, you'll get to know your classmates through Zoom during scheduled class times.

**Register on Self-service today! For more info, contact Project  
Success Coordinator [michelle.crooks@gcccd.edu](mailto:michelle.crooks@gcccd.edu)  
or visit [www.grossmont.edu/ps](http://www.grossmont.edu/ps)**

# English 020 Support



## What is it?

Grossmont students can take English 120: College Composition & Reading linked to English 020. This second course offers an additional unit of support—time to practice skills, engage in group work, and get extra one-on-one help. The instructors are specially trained, and many of the sections have class tutors. English 020 is required for students who earned below a 2.6 GPA in high school, but it is also available to anyone who could use this extra hour per week to help succeed in English.

## Fall 2021 Options

### Mon./Wed. Sections

English 120—Jendian  
M/W 8:00–9:15am (#1137)  
English 020  
M 9:30–10:20am (#6150)

English 120—Praniewicz  
M/W 9:30–10:45am (#3016)  
English 020  
W 11:00–11:50am (#3604)

English 120—Balasubramanian  
M/W 11:00–12:15pm (#3037)  
English 020  
W 12:30–1:20pm (#5933)

English 120—Cervantes  
(on campus Mondays)  
M/W 11:00–12:15pm (#3035)  
English 020  
M 12:30–1:20pm (#3598)  
\*FYE Program: This course is linked to Counseling 120 & Ethnic Studies/Hist 119.

English 120—Deutsch  
(on campus Wednesdays)  
M/W 12:30–1:45pm (#4113)  
English 020  
W 2:00–2:50pm (#6577)

English 120—Toland-Perry  
(on campus Wednesdays)  
M/W 2:00–3:15pm (#5875)  
English 020  
W 3:30–4:20pm (#5934)

English 120— Sayre  
100% Online (#3026)  
English 020 W 9:30–10:20am (#9143)

### Tues./Thurs. Sections

English 120—Jendian  
T/Th 8:00–9:15am (#3009)  
English 020  
Th 9:30–10:20am (#5936)

English 120—Deutsch  
(on campus Thursdays)  
T/Th 9:30–10:45am (#3024)  
English 020  
Th 11:00–11:50am (#3600)

English 120—Sayre  
T/Th 9:30–10:45am (#3021)  
English 020  
T 11:00–11:50am (#5930)

English 120—Nolen  
T/Th 11:00–12:15pm (#3326)  
English 020  
T 12:30–1:20pm (#3593)

English 120—Jayne  
T/Th 11:00– 12:15pm (#3324)  
English 020  
T 12:30–1:20pm (#7621)

English 120—Cardenas  
T/Th 12:30–1:45pm (#4817)  
English 020  
T 2:00–2:50pm (#3590)  
\*Puente Program: This course is linked to Counseling 120.

English 120—Berger  
(on campus Tuesdays)  
T/Th 12:30–1:45pm (#4825)  
English 020  
T 2:00–2:50pm (#5935)

English 120—McGaughey-Gilreath  
T/Th 2:00–3:15pm (#5910)  
English 020  
Th 3:30–4:20pm (#3605)

English 120—Nolen  
T/Th 3:30pm–4:45pm (#6578)  
English 020  
T 5:00–5:50pm (#5931)

English 120—Sow  
100% Online (#5866)  
English 020 Th 12:30–1:20pm (#3588)  
\*Umoja Program: This course is linked to Counseling 130 & Ethnic Studies/History 180.

English 120—Toland-Perry  
100% Online (#3318)  
English 020 W 9:30–10:35am (#9144)  
(late start 14 weeks)

### 100% Online

English 120 (#3029)—Ledri-Aguilar  
English 020 (#3599)

English 120 (#9856)—Crooks  
English 020 (#9142)  
(late start 14 weeks)

**For more info, contact the  
English 120/020 Coordinator at  
[michelle.crooks@gcccd.edu](mailto:michelle.crooks@gcccd.edu)**

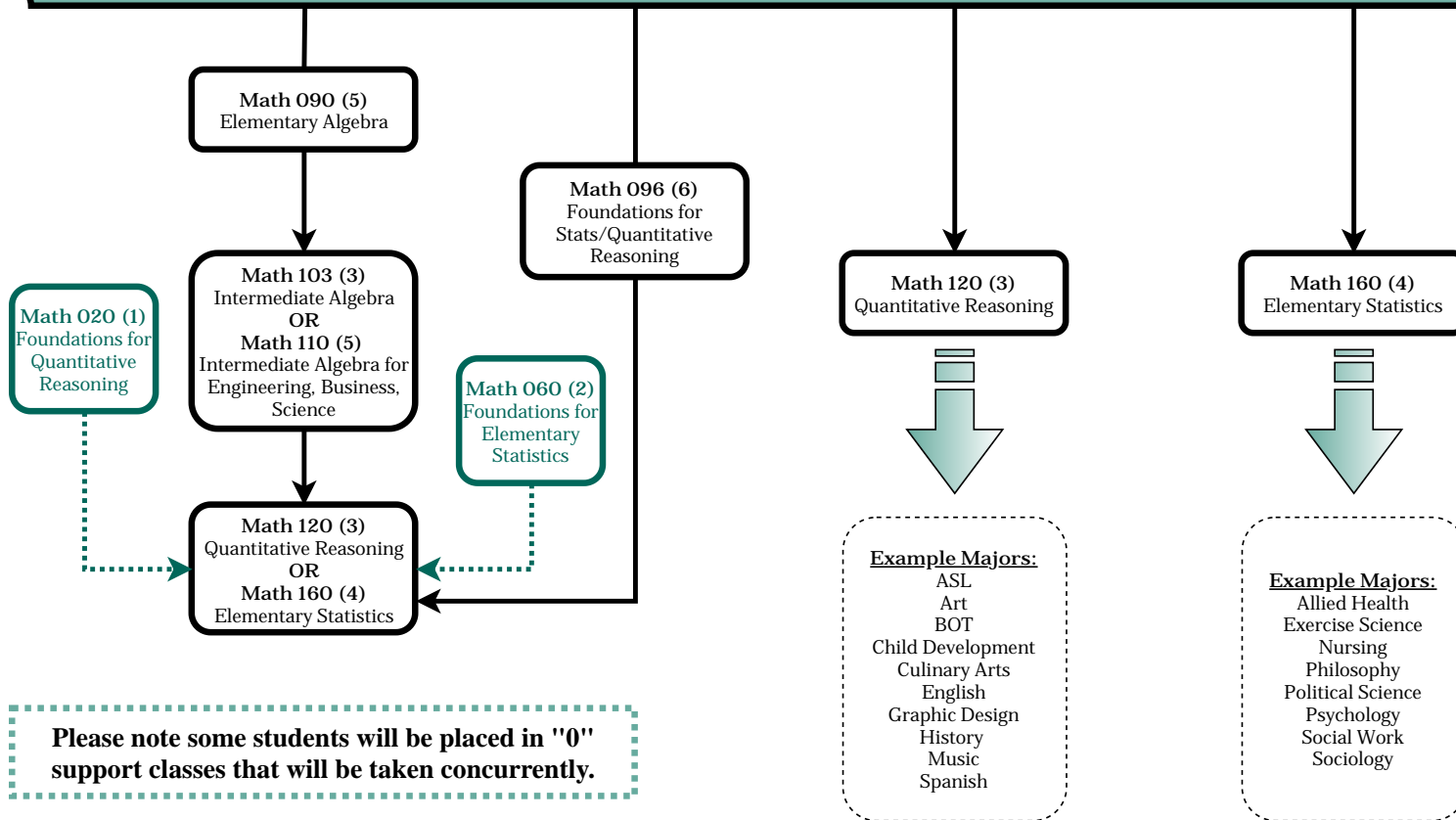






## GENERAL

### Math Pathways



Unit Value in Parenthesis

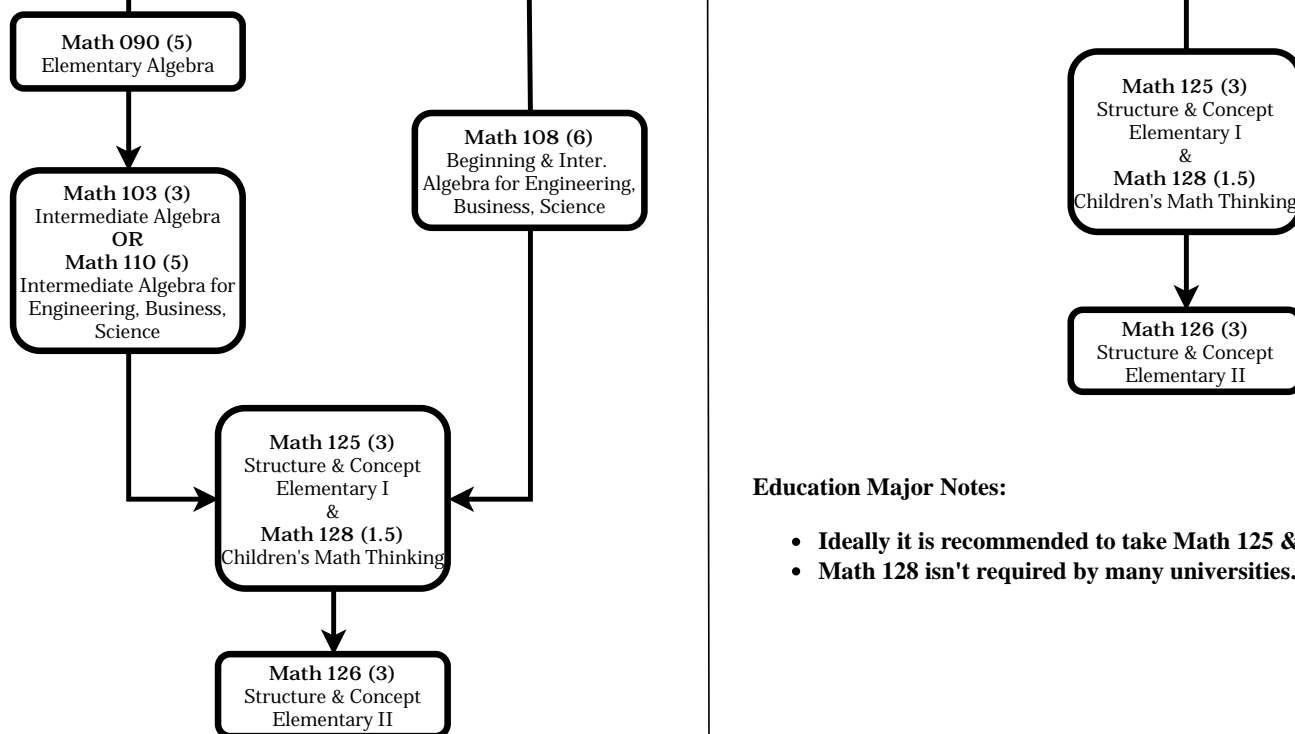
*Please see a counselor prior to registering for a Math class.*

Grossmont College Mathematics Department





## EDUCATION

Math Pathways**Education Major Notes:**

- Ideally it is recommended to take Math 125 & Math 128 concurrently.
- Math 128 isn't required by many universities.

*Please see a counselor prior to registering for a Math class.*

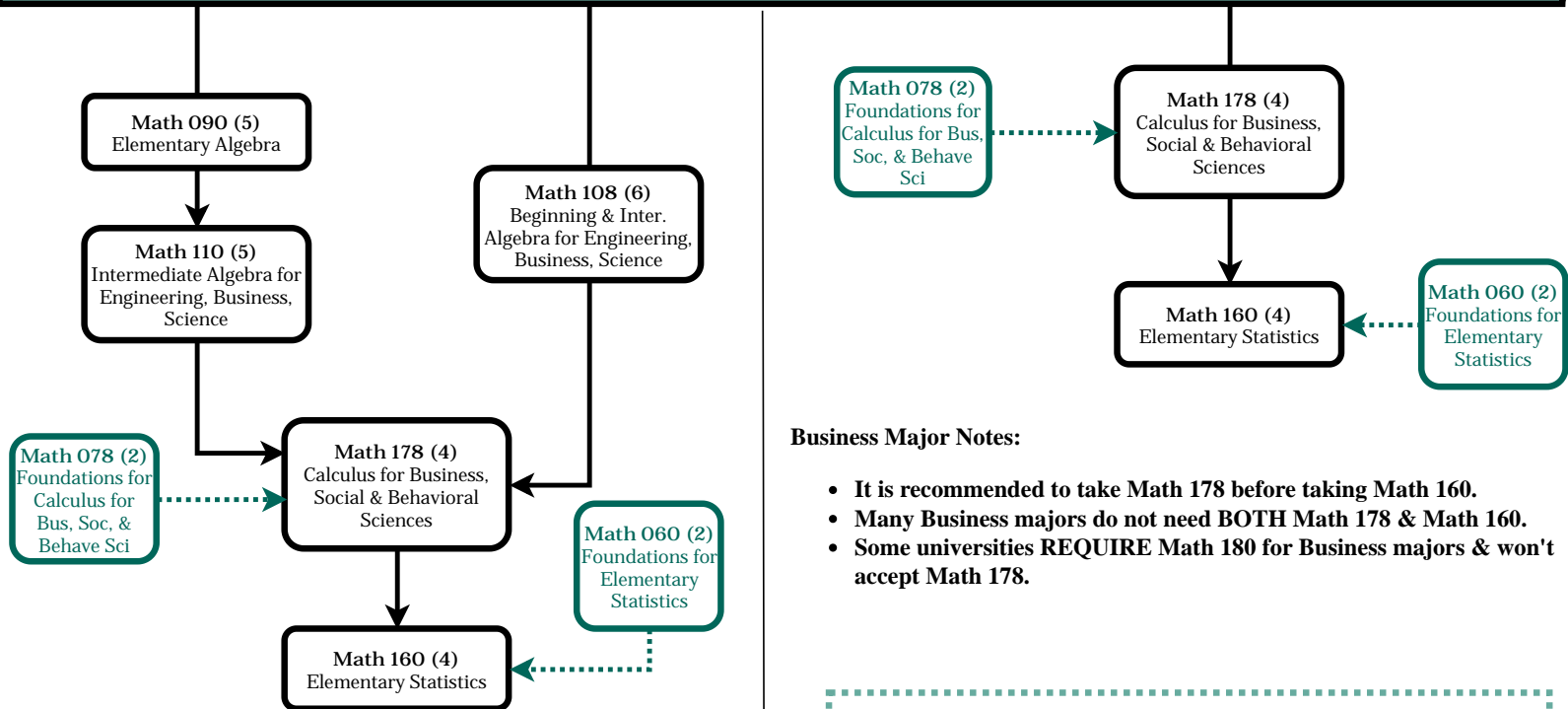
Unit Value in Parenthesis

Grossmont College Mathematics Department



# BUSINESS

## Math Pathways



### Business Major Notes:

- It is recommended to take Math 178 before taking Math 160.
- Many Business majors do not need BOTH Math 178 & Math 160.
- Some universities REQUIRE Math 180 for Business majors & won't accept Math 178.

Please note some students will be placed in "0" support classes that will be taken concurrently.

Unit Value in Parenthesis

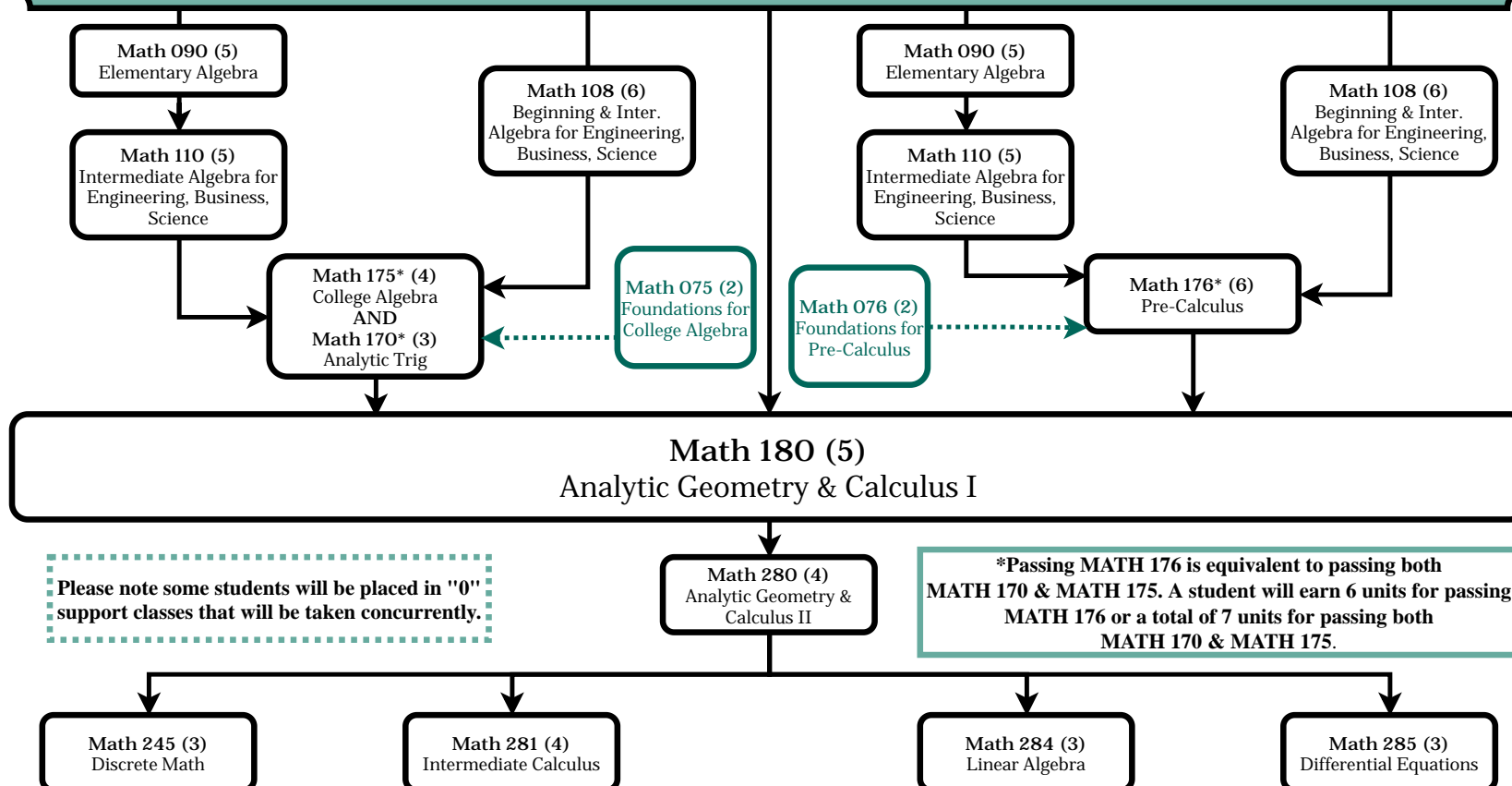
Please see a counselor prior to registering for a Math class.

Grossmont College Mathematics Department





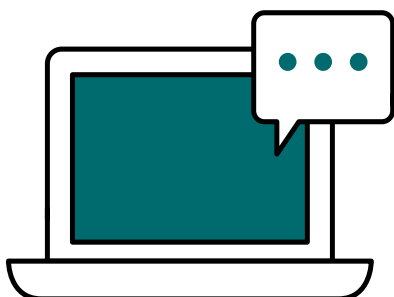
## STEM

Math Pathways

Unit Value in Parenthesis

Please see a counselor prior to registering for a Math Class.

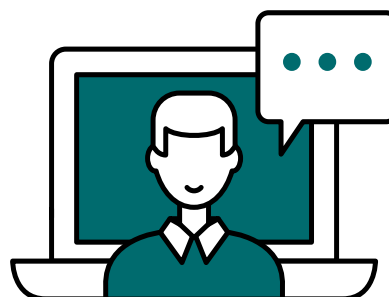
Grossmont College Mathematics Department



## Fully Online (FO) / Distance Education (DE)

Fully Online/Distance Education course activity occurs online and there are no required real-time or on-campus meetings. All content is delivered in a course management system (Canvas). Coursework has due dates as set by the instructor, yet can be completed at any time before the due date according to an individual student's schedule. Quizzes or tests may have a shortened period (usually a week's time) during which students will need to complete them.

- **Marked "WEB" in the schedule for the location**
- **Does not meet on specific day/times**



## Partially Online (PO) / Hybrid (HYD)

Partially Online/Hybrid course activity occurs both online and face-to-face (F2F) on-campus. Both the online and on-campus portions are required. The on-campus meetings occur on scheduled days and times. All online content is delivered in a course management system (Canvas) and via online meetings (Zoom).

- **Includes both F2F on specific days/times and "WEB" portions**
- **Read the course section details carefully**



## Face-to-Face (F2F)

Face-to-face (F2F) course activity occurs at Grossmont College's campus or a designated physical site. The course meetings occur at scheduled days and times. Instructors may use a curriculum management system (Canvas) or other software to enhance the class (i.e. posting the syllabus or hosting a discussion board) outside of the on-campus meetings.

- **"Location" in class schedule lists building / room number**
- **Refer to the "How To Read Course Offerings" for guidance**



## Emergency Online (EO) / Emergency Remote Teaching (ERT)

The emergency class format has required real-time online meetings (Zoom) occurring on scheduled days and times. Most course activity occurs online. There may be required on-campus meetings (i.e., for final exams). Course content can be delivered both in a course management system (Canvas) and synchronously online (via Zoom). Quizzes, tests, and other coursework may be completed outside of the online Zoom meetings by the due date set by the instructor.

- **Synchronous meeting times marked "WEB" in the schedule with specific days/times**
- **Any on-campus components are in section notes**